

STATE OF MICHIGAN
DEPARTMENT
OF
NATURAL RESOURCES
LAND CORNER RECORD

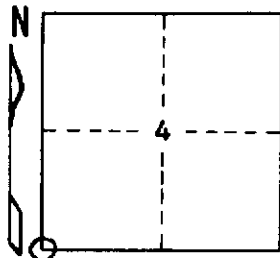
Iron COUNTY
T 44N R 31W

DESCRIPTION OF CORNER Section Corner 4, 5, 8, and 9

CORNER MONUMENT 1" I.D. x 36" iron pipe with 4" aluminum cap.

DATE MONUMENT PLACED AND WITNESSED November 25, 1970

WITNESSES TO CORNER..... Cedar 12 N20°E (mag.) 24.0 ft. "S4, NBT"



Red Maple 5 S34°W (mag.) 17.2 ft. "S8, NBT"

Y. Birch 15 S78°E (mag.) 48.0 ft. "S9, NBT"

AND

CIRCLE CORNER REGISTERED

DESCRIPTION IN DETAIL AS TO HOW CORNER WAS LOCATED AND IDENTIFIED OR RESTORED.

Found a 3/4" I.D. iron pipe and point of an old wood post in place as set by unknown party, with an old cruiser's register tree bearing dates from the 1920's S58°W 21.8 ft. from it. Corner accepted as found. It lies 79.00 ch. S of a re-established corner on the twp. line (record 78.90 ch.) and 40.48 ch. W of an original 1/4 corner bet. Sec. 4 & 9 (record 40.19 ch.).

SURVEYOR'S SEAL

DISTRIBUTION:

SIGNED

Arthur O. Enger
REGISTERED LAND SURVEYOR
Arthur O. Enger

DATE March 17, 1972

County Courthouse
Area Forester (Regions I & II)
District or Region Surveyor
Forestry Div., Lansing

R 4047
Rev. 10/68