

LAND CORNER RECORDATION CERTIFICATE  
Filing Requirement of Act 74, Mich. P.A. 1970

For corners in  
Iron

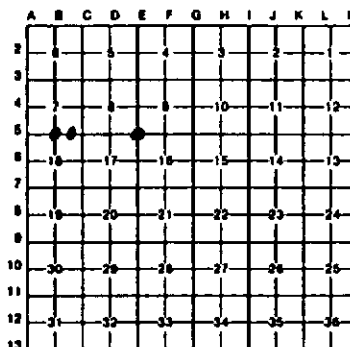
(County)	Located in:	Corner Code #
1. Public Land Survey	T 45N R 31W	85
	T 45N R 31W	85
	T R	
	T R	
2. Property Controlling in Section	S 7 T 45N R 31W	16
	S T R	
3. Miscellaneous Property in Sec.	S T R	
	S T R	

Register of Deeds Stamp & File Number

4. Lot No. \_\_\_\_\_, Recorded Plat \_\_\_\_\_  
 5. Private Claims \_\_\_\_\_

I, Stephan J. Szyszkoski, in a field survey on June 09, 1993, 19 \_\_\_\_\_, do hereby certify that under requirements of P.A. 74, Michigan P.A. of 1970, the corner points mentioned in lines 1 and 2 above were in conformance with regulations and rules therefore as required in the current manual of survey instructions of the United States Department of the Interior, Bureau of Land Management or by a decree of a Court of Law and/or that the corner points mentioned in lines 3, 4 and 5 above were in conformance with the rules of the Michigan Board of Land Surveyors or by a Decree of a Court of Law; established, re-established, monumented, re-monumented, recovered, found as expressed below:

NOTE: Not more than 4 corners, all in the same town and range, may be recorded on this certificate.



A. Description of original monument and accessories and/or subsequent restoration:

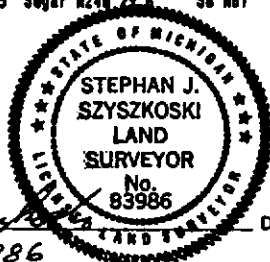
- (85) Quarter corner common to Sections 7-18. Original corner established in 1849 by U.S. Deputy Surveyor John Burt. Original BTs: Sugar 20 N56W 31, Sugar 10 N80E 19. Found no subsequent record.
- (E5) Corner common to Sections 8-9-16-17. Corner previously recorded in 1971 by Arthur O. Enger, ALS as follows: Set 1" I.D.x36" iron pipe with 4" aluminum cap from natural feature calls. 1971 NBTs: Aspen 8 N27W 28.5', Aspen 8 S02E 4.2', Maple 6 N61E 33.1', Spruce 4 S41E 43.7'. Found no subsequent record.
- (16-Sec. 7) East 1/16 corner between sections 7-18. Corner not established in the original survey. Found no subsequent record.

B. Description of corner evidence found and/or method applied in restoring or reestablishing corner:

- (85) Original post and accessories not recovered. Found no acceptable evidence of the position of the original corner, although possible OBT stump holes intersect about 5 ft. south of the corner as reestablished (no wood was found in these holes). Reestablished the corner on a straight line between section corners 2634.37' west and 2635.69' east, being the proportionate position. At the position for the corner, I placed a 1"x32" iron pipe capped with a 4" dia. cast aluminum MDMR tablet, appropriately stamped.
- (E5) Found and accepted corner monument as previously recorded. The 1971 NBTs were recovered as follows: Aspen 8 N24W 28.5', a dead stub; Aspen 14 S02E 4.2' in good condition; Maple 8 N66E 33.1' in good condition; Spruce 6 S37E 43.7' in good condition. Marked one new witness tree as described below.
- (16-Sec.7) Found no evidence of prior monumentation. Established the corner on a straight line between quarter corner and section corner 1317.85' west and east. At the position for the corner, I placed a 1"x32" iron pipe capped with a 4" dia. cast aluminum MDMR tablet, appropriately stamped.

C. Description of monument for corner and accessories established to perpetuate locating the position of the corner:

- |  |  |   |
|--|--|---|
| (85) Set 1" iron pipe with 4" cap.<br>Blazed and scribed the following new bearing trees (bearings magnetic):<br>6" Sugar N29W 9.4' "1/4S NBT"<br>12" Sugar N64E 24.1' "1/4S NBT"<br>12" Sugar S22E 31.6' "1/4S NBT"<br>8" Sugar S67W 17.2' "1/4S NBT"<br>Placed a 3" squared sugar post adjacent. | (E5) Found 1" pipe with 4" cap.<br>Blazed and scribed the following new bearing tree (bearing magnetic):<br>5" Sugar N24W 28.5' "SB NBT" | (16-Sec.7) Set 1" pipe with 4" cap.<br>Blazed and scribed the following bearing trees (bearings magnetic):<br>6" Ironwood N50W 17.9' "1/16S BT"<br>9" Basswood N33E 20.3' "1/16S BT"<br>4" Sugar N55E 13.0' "1/16S BT"<br>6" Twin sugar N82E 21.4' "1/16S BT" |
|--|--|---|



Signed by Stephan J. Szyszkoski Date 6-28-93  
 Surveyor's Michigan License No. 33986