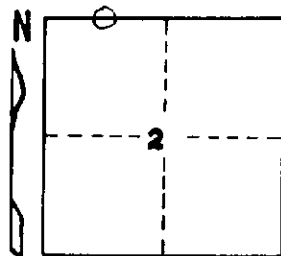


STATE OF MICHIGAN  
DEPARTMENT  
OF  
NATURAL RESOURCES  
LAND CORNER RECORD

Iron COUNTY  
T 45-46N R 31W

DESCRIPTION OF CORNER West 1/16 corner between Sections 2 and 35  
CORNER MONUMENT 1" I.D. x 36" iron pipe with 4" aluminum cap  
DATE MONUMENT PLACED AND WITNESSED June 17, 1969  
WITNESSES TO CORNER..... Sugar Maple 8 S58°W 47 links "1/16S BT"



Red Maple 7 N1½°W 37½ links "1/16S BT"

Bearings are magnetic

AND

CIRCLE CORNER REGISTERED

DESCRIPTION IN DETAIL AS TO HOW CORNER WAS LOCATED AND IDENTIFIED OR RESTORED.

Monument placed by proportionate measurement on line between section corners 99.79 chains west and 59.88 chains east. Found no evidence that this corner had ever been established previously.

Variation at this corner is 4°45' East, which is abnormal for the area.

SURVEYOR'S SEAL

DISTRIBUTION:

SIGNED

Arthur O. Enger  
REGISTERED LAND SURVEYOR

DATE

2/26/70

County Courthouse  
Area Forester (Regions I & II)  
District or Region Surveyor  
Forestry Div., Lansing

R 4047  
Rev. 10/68