

# SURVEY & REMONUMENTATION

FEB 21 2001

## SECTION

### LAND CORNER RECORDATION CERTIFICATE Filing Requirement of Act 74, Mich. P.A. 1970

For corners in

<u>Iron</u> (County)	Located in:	Corner Code #
1. Public Land Survey	T <u>46N</u> R <u>35W</u>	<u>G-9</u>
	T <u>    </u> R <u>    </u>	<u>    </u>
	T <u>    </u> R <u>    </u>	<u>    </u>
	T <u>    </u> R <u>    </u>	<u>    </u>
2. Property Controlling in Section	S <u>    </u> T <u>    </u> R <u>    </u>	<u>    </u>
	S <u>    </u> T <u>    </u> R <u>    </u>	<u>    </u>
3. Miscellaneous Property in Sec.	S <u>    </u> T <u>    </u> R <u>    </u>	<u>    </u>
	S <u>    </u> T <u>    </u> R <u>    </u>	<u>    </u>

COMMENCING YEAR 2000  
RECEIVED FOR RECORD  
IRON COUNTY, MICHIGAN

00 DEC -8 PM 1:05

L.C. Records: L. 8, P. 263

*Robert J. Pisoni*  
REGISTERED LAND SURVEYOR

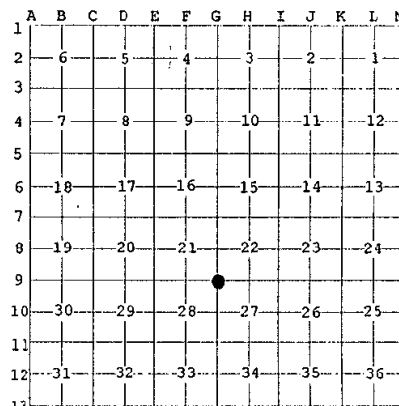
Register of Deeds Stamp & File Number

4. Lot No.         , Recorded Plat           
5. Private Claims         

Section Corner to Sections 21, 22, 27, 28, T46N, R35W

I, Gary L. Pisoni, in a field survey on September 12, 2000, do hereby state that under requirements of P.A. 74, Michigan P.A. of 1970, the corner points mentioned in lines 1 and 2 above were in conformance with regulations and rules therefore as required in the current manual of survey instructions of the United States Department of the Interior, Bureau of Land Management or by a decree of a Court of Law and /or that the corner points mentioned in lines 3, 4 and 5 above were in conformance with the rules of the Michigan Board of Land Surveyors or by a Decree of a Court of Law; established, re-established, monumented, recovered, found as expressed below:

NOTE: Not more than 2 corners, all in the same town and range, may be recorded on this certificate.



#### A. Description of original monument and accessories and/or subsequent restoration:

Original corner established in 1851 by Harvey Mellen, U.S. Deputy Surveyor.  
Original Corner; Wood Post

Original Bearing Trees:

Hemlock	12"	S 60°E	27 links (17.82 feet)
Spruce	12"	N 60°W	40 links (26.40 feet)

Harold G. Peterson, surveyor, recovered this corner in 1933.

On 4/9/63, Donald D. Lappala RLS USFS found the decayed remains of the original hemlock bearing tree and set a 2" diameter by 5' long iron pipe with a 3" brass tablet stamped as follows: T46N, R35W, S-21, S-22, S-27, S-28, 1963, RLS 12585, recorded in Liber 3, Page 194 of LC records.

1963 Bearing Trees:

Hemlock	11"	N 45°E	52.2 feet
Hemlock	6"	S 62°E	13.2 feet
Cedar	8"	S 53°W	38.5 feet

PEER GROUP APPROVED

*Iron County Rep.* 11-30-2000  
COUNTY REPRESENTATIVE

#### B. Description of corner evidence found and/or method applied in restoring or reestablishing corner:

No evidence of original B.T.s found.

Found the above described monument and the following bearing trees:

Hemlock	17"	N 48°E	52.20 feet
Hemlock	12"	S 60°E	13.34 feet
Cedar	13"	S 54°W	38.22 feet
Wood sign post		N 65°E	5.0 feet

Monument is 24" above ground surface.

Corner record research on file with County Representative.

#### C. Description of monument for corner and accessories established to perpetuate locating the position of the corner:

Blazed and scribed the following new bearing tree: (All measurements taken to a nail in side of tree)

Red Maple	14"	N 43°W	6.29 feet
Steel sign post		N 72°W	1.0 feet

00-031

Signed by Gary L. Pisoni Date 11-23-2000

Surveyor's Michigan License No. 27457

FORM APPROVED BY MICHIGAN STATE BOARD OF PROFESSIONAL SURVEYORS, JAN. 28, 1991

