

LAND CORNER RECORDATION CERTIFICATE  
Filing Requirement of Act 74, Mich. PA 1970

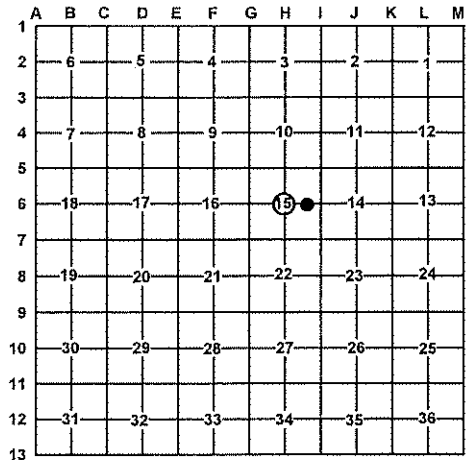
For Corners In: Kalkaska (County)	Located In	Corner Code #
1. Public Land Survey	T 27N R 7W	H6
	T	
2. Property Controlling in Section	S 15 T 27N R 7W	9
	S	
3. Miscellaneous Property in Section	S T R	
	S T R	
4. Lot No:	Recorded Plat:	
5. Private Claims:		

DOCUMENT # 3128806  
STATE OF MICHIGAN  
KALKASKA COUNTY  
RECORDED: 03/03/2016 4:13 PM  
PAGES: 1  
RECORDING FEES: 14.00  
JOANN DEGRAAF REGISTER OF DEEDS  
BK: 4 PG: 8

Register of Deeds Stamp & File Number

I, Joshua R. Davidson, in a field survey on October 1, 2014 do hereby state that under requirements of PA 74, Michigan PA of 1970, the corner points mentioned in lines 1 and 2 above were in conformance with regulations and rules therefore as required in the current manual of survey instructions of the United States Department of the Interior, Bureau of Land Management or by a decree of a Court of Law and/or that the corner points mentioned in lines 3, 4 and 5 above were in conformance with the rules of the Michigan Board of Land Surveyors or by a Decree of a Court of Law; established, re-established, monumented, recovered, found as expressed below:

NOTE: Not more than 2 corners, all in the same town and range, may be recorded on this certificate.



A. Description of original monument and accessories and/or subsequent restoration:

H6 – Center 1/4 corner section 15

9 – CE 1/16 corner section 15

1990 – Plat of Twin Birch #1 – card # 60785 – Eugene Farrier, PS #24594 – iron & RLS cap #13030.

None

B. Description of corner evidence found and/or method applied in restoring or re-establishing corner:

H6 – Center 1/4 corner section 15

9 – CE 1/16 corner section 15

Found 1/2" rebar in concrete block with poured concrete around it. Added 2" aluminum cap to 1/2" rebar and accepted as the best available evidence of the position of the corner.

Set a stamped 2" aluminum cap on a 5/8" x 34" rebar per standard BLM procedure in tag alder swamp.

C. Description of monument for corner and accessories established to perpetuate locating the position of the corner:

H6 – 2" AC on 1/2" rebar in concrete block with poured concrete around it. Set blue post with location tag 1' southeast.

9 – a stamped 2" aluminum cap on 5/8" x 34" rebar

N39°E 18.48' to set nail & tag in W. side 12" R. Pine  
S71°E 5.67' to set nail & tag in N. side 10" Twin Cherry  
S07°E 20.00' to set nail & tag in W. side 19" R. Pine  
N32°W 16.70' to set nail & tag in SW. side 14" R. Pine

N03°E 40.06' to set 1/2" X 24" rebar  
S88°W 35.68' to set 1/2" X 18" smooth iron rod  
Set blue post with location tag 1' Southeast.

Signed by:

*Joshua R. Davidson*

Date:

March 3, 2016

Surveyor's Michigan License No.:

46659

