

\$7.00
\$2.00

FEB 14 1997

LAND CORNER RECORDATION CERTIFICATE
Filing Requirement of Act 74, Mich. P.A. 1970

"other" code #7

For corners in **COMMISSION** KENT COUNTY REMONUMENTATION

Kent (County)	Located in: Caledonia Township	Corner Code #
1. Public Land Survey	T _____ R _____	_____
	T _____ R _____	_____
	T _____ R _____	_____
	T _____ R _____	_____
2. Property Controlling in Section	S <u>11</u> T <u>5N</u> R <u>10W</u>	South Witness Monument
3. Miscellaneous Property in Sec.	S _____ T _____ R _____	1066.53' South of K-4

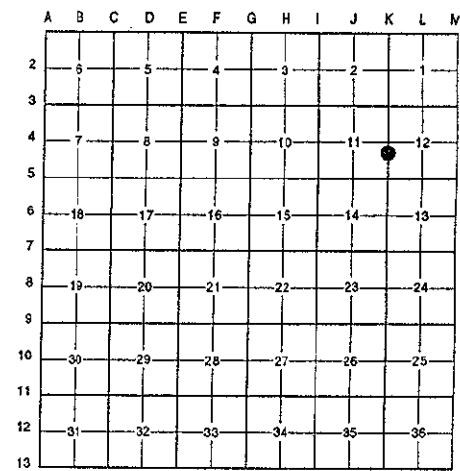
STATE OF MICHIGAN
COUNTY OF KENT
RECEIVED FOR RECORD
96 NOV -8 AM 9:23
REG. OF DEEDS
9551

Register of Deeds Stamp & File Number

4. Lot No. _____, Recorded Plat _____
5. Private Claims _____

I, Randy Kolehouse, in a field survey on May 6 19 96, do hereby certify that under requirements of P.A. 74 Michigan P.A. of 1970, the corner points mentioned in lines 1 and 2 above were in conformance with regulations and rules therefore as required in the current manual of survey instructions of the United States Department of the interior, Bureau of Land Management or by a decree of a Court of Law and/or that the corner points mentioned in lines 3, 4 and 5 above were in conformance with the rules of the Michigan Board of Land Surveyors or by a Decree of a Court of Law; established, re-established, monumented, re-monumented, recovered, found as expressed below:

NOTE: Not more than 4 corners, all in the same town and range, may be recorded on this certificate.



A. Description of original monument and accessories and/or subsequent restoration:

K-4A 1831	G.L.O. Notes	Mullett	K-4 Falls in Lake - Set Temporary Point 40 Ch. North of K-5 Also Meander Corner 30.5 Ch. North of K-5
1986	Notes	Medema, Van Kooten & Assoc.	Set Iron Bar
1993.	L.C.R.C. #6726	T. Chettleburgh	Fnd. Iron Bar / Set K.C. Monument
1993	L.C.R.C. #8136	K. Breitels	K.C. Monument

P.A. 345 1990 KENT COUNTY
PEER APPROVED 8/22/96
CHAIRMAN Randy Kolehouse

This corner was originally approved by the Kent County Remonumentation Peer Group and monumented by T. Chettleburgh on 1/14/93 and was recorded per L.C.R.C. #6726.

B. Description of corner evidence found and/or method applied in restoring or reestablishing corner:

K-4A Found a Standard Kent County Monument on the C/L of Kettle Lake Road per L.C.R.C.'s #6726 and #8136 as set by T. Chettleburgh in place of an iron rod he found which checked the 1986 notes of Medema, Van Kooten & Assoc.

L.C.R.C. #6726

L.C.R.C. #8136

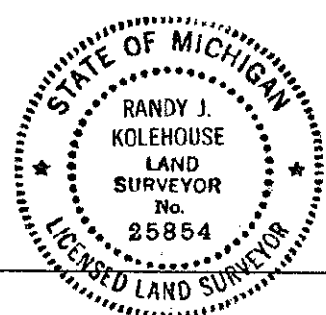
Nail/Tag E side 20" Oak N 01° E 79.04'	Nail & KC Remon. tag E. side 20" Oak N 01° E 79.06'
Wly Corner House (#7449) S 57° E 68.81'	Wly corner house #7449 S 57° E 68.81'
Wly Corner House (#7441) S 00° E 134.03'	Wly corner house #7441 S 00° E 134.03'
Nail/Tag NW side 13" Pine S 21° W 60.05'	Nail & KC Remon. tag NW side 15" Pine S 21° W 60.11'
Ely Corner House (#7440) N 37° W 82.88'	E'ly corner house #7440 N 37° W 82.88'

The selected location is accepted by me and is generally accepted by professional surveyors as the best available evidence of the position of the original corner.

C. Description of monument for corner and accessories established to perpetuate locating the position of the corner:

K-4A Standard Kent County Monument

Nail & KC Remon. tag in E. side 20" Oak N 01° E 79.06'
Wly corner house #7449 S 57° E 68.81'
Wly corner house #7441 S 00° E 134.03'
Nail & KC Remon. tag in NW side 15" Pine S 21° W 60.11'
E'ly corner house #7440 N 37° W 82.88'
KC Mon. @ K-5, T5N, R10W, South 1590.05'



Signed by Randy J. Kolehouse Date 10/8/96
EARTH TECH
Surveyor's Michigan License No. 25854