

SURVEY &  
REMONUMENTATION  
\$7.00  
\$2.00 SEP 18 1995

LAND CORNER RECORDATION CERTIFICATE  
Filing Requirement of Act 74, Mich. P.A. 1970  
KENT COUNTY REMONUMENTATION

For corners in

Kent  
(County)

Located in:

Corner Code #

- |                                       |      |       |      |
|---------------------------------------|------|-------|------|
| 1. Public Land Survey                 | T 5N | R 12W | B-11 |
|                                       | T    | R     |      |
|                                       | T    | R     |      |
|                                       | T    | R     |      |
| 2. Property Controlling<br>in Section | S    | T     | R    |
|                                       | S    | T     | R    |
| 3. Miscellaneous                      | S    | T     | R    |
| Property in Sec.                      | S    | T     | R    |

4. Lot No. \_\_\_\_\_, Recorded Plat \_\_\_\_\_  
5. Private Claims \_\_\_\_\_

I, Randy Kolehouse, in a field survey on March 14 19 95,  
do hereby certify that under requirements of P.A. 74 Michigan P.A. of 1970, the corner points  
mentioned in lines 1 and 2 above were in conformance with regulations and rules therefore as required  
in the current manual of survey instructions of the United States Department of the Interior, Bureau of  
Land Management or by a decree of a Court of Law and/or that the corner points mentioned in lines 3,  
4 and 5 above were in conformance with the rules of the Michigan Board of Land Surveyors or by a  
Decree of a Court of Law; established, re-established, monumented, re-monumented, recovered,  
found as expressed below:

NOTE: Not more than 4 corners, all in the same town and range, may be recorded  
on this certificate.

A. Description of original monument and accessories and/or subsequent restoration:

B-11	1831	G.L.O. Notes	Mullett	Set Post
	1940	Wit. Map	K.C. Surveyor	Monument Box
	1977	L.C.R.C. #1118	Nederveld & Jonker	Iron in Monument Box
	1981	L.C.R.C. #1561	Nederveld & Jonker	End. Iron in Mon. Box/Set K.C. Monument
	1988	L.C.R.C. #4637	Olson, Meyers & May	K.C. Monument

This corner was originally approved by the Kent County Remonumentation Peer Group and monumented by Nederveld &  
Jonker on 1/5/81 and was recorded per L.C.R.C. #1561.

B. Description of corner evidence found and/or method applied in restoring or reestablishing corner:

B-11 Found standard Kent County Monument in a monument box 1' M/L South of the C/L of 100th Street running E-W per  
L.C.R.C.'s #1561 and #4637 as set by Nederveld & Jonker in place of an iron in monument box they found which checked  
L.C.R.C. #1118 and K.C. Surveyor's records.

L.C.R.C. #1561

L.C.R.C. #4637

Nail & K.C. Remon tag Wly side P. pole N.W. 80.52'  
Nail & K.C. Remon tag Wly side P. pole N.N.E. 57.85'  
Nail & K.C. Remon. tag E. side T. pole S.E. 67.35'  
S.W. corner house N.E. 98.32'

Nail & K.C. Remon tag on Wly sde P pole N 30 W 80.52'  
Nail & K.C. Remon tag on Wly sde P pole N 20 E 57.85'  
Nail & K.C. Remon tag on E sde T pole S 20 E 67.35'  
SW cor fndn hse N 70 E 98.32'

The selected location is accepted by me and is generally accepted by professional surveyors as the best available evidence  
of the position of the original corner.

C. Description of monument for corner and accessories established to perpetuate locating the position of the corner:

B-11 Standard Kent County Monument in Monument Box

Nail & K.C. remon. tag in W side P. pole N 30° W 80.52'  
Nail & K.C. remon. tag in P. pole N 20° E 57.30'  
Nail & K.C. remon. tag in T. pole S 20° E 67.25'  
SW cor. hse. fndn. N 70° E 98.32'  
C/L of 100th Street bituminous North 1' M/L

Signed by Randy J Kolehouse

Date 8/21/95

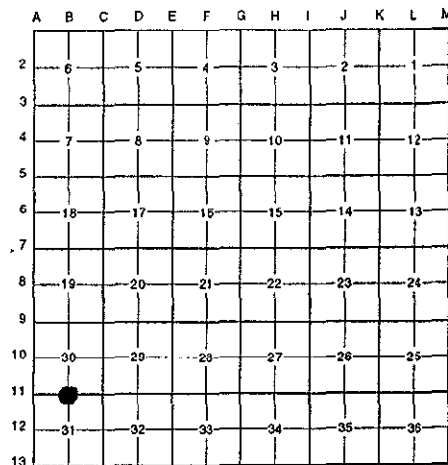
EARTH TECH

Surveyor's Michigan License No. 25854

STATE OF MICHIGAN  
COUNTY OF KENT  
RECEIVED FOR RECORD  
95 AUG 28 AM 10:48  
REG. OF DEEDS

8562

Register of Deeds Stamp & File Number



P.A. 345 1990 KENT COUNTY

PEER APPROVED 5/25/95  
CHAIRMAN Harvey Hulse

