

Survey & Remonumentation
\$7.00
\$2.00 SEP 18 1995

LAND CORNER RECORDATION CERTIFICATE
Filing Requirement of Act 74, Mich. P.A. 1970
KENT COUNTY REMONUMENTATION

COMMISSION

For corners in

Kent (County)	Located in:	Corner Code #
1. Public Land Survey	T 5N R 12W	C-12
	T R	
	T R	
	T R	
2. Property Controlling in Section	S T R	
	S T R	
3. Miscellaneous Property in Sec.	S T R	
	S T R	

STATE OF MICHIGAN
COUNTY OF KENT
RECEIVED FOR RECORD
95 AUG 28 AM 10:48
8575
Register of Deeds Stamp & File Number

4. Lot No. _____, Recorded Plat _____
5. Private Claims _____

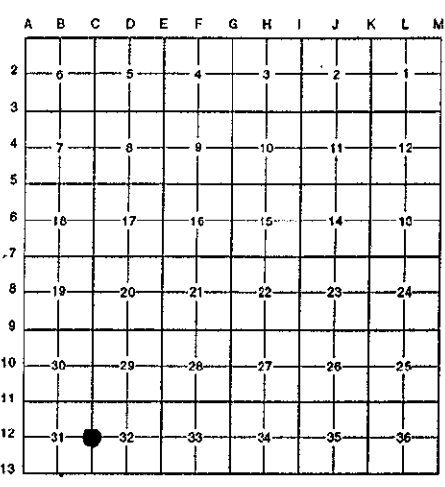
I, Randy Kolehose, in a field survey on March 14 19 95, do hereby certify that under requirements of P.A. 74 Michigan P.A. of 1970, the corner points mentioned in lines 1 and 2 above were in conformance with regulations and rules therefore as required in the current manual of survey instructions of the United States Department of the Interior, Bureau of Land Management or by a decree of a Court of Law and/or that the corner points mentioned in lines 3, 4 and 5 above were in conformance with the rules of the Michigan Board of Land Surveyors or by a Decree of a Court of Law; established, re-established, monumented, re-monumented, recovered, found as expressed below:

NOTE: Not more than 4 corners, all in the same town and range, may be recorded on this certificate.

A. Description of original monument and accessories and/or subsequent restoration:

C-12	1831	G.L.O. Notes	Mullett	Set Post
	1940's	Wit. Map	K.C. Surveyor	Iron Over Stone
	1973	L.C.R.C. #601	Mdema Van Kooten	Square Iron
	1978	L.C.R.C. #1125	Williams & Works	"T" Iron Over Stone
	1982	L.C.R.C. 2816	Jonker	Fnd. "T" Iron Over Stone/Set K.C. Mon.
	1988	L.C.R.C. 4621	Olson, Meyers, May	K.C. Monument
	1990	L.C.R.C. #5706	J. Bueche	K.C. Monument

P.A. 345 1990 KENT COUNTY
PEER APPROVED 5/25/95
CHAIRMAN Harry Huber



This corner was originally approved by the Kent County Remonumentation Peer Group and monumented by Jonker Land Surveyors on 3/26/82 and was recorded per L.C.R.C. #2816.

B. Description of corner evidence found and/or method applied in restoring or reestablishing corner:

C-12 Found standard Kent County Monument 9' M/L West of the C/L of Wilson Avenue running N-S and 2' M/L North of the C/L of 104th Street running West per L.C.R.C.'s #2816, #4621 and #5706 as set by Rob Jonker in place of a "T" iron he found over the top of a leaded stone (22" below grade) which checks L.C.R.C. #1125 and the K.C. Surveyor records. Note: Square iron shown in L.C.R.C. #601 is 9.5' East of K.C. Monument.

L.C.R.C. #4621

L.C.R.C. #5706

Remon tag & nail on E sde P pole N 10° W 137.4'
C/L stop sign S 75° W 50.7'

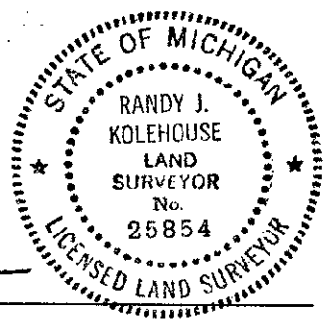
Nail & remon tag in N side P. pole S 80° E 26.35'
Nail & remon tag in E side P. pole N 10° W 137.40'
Iron N 40° W 65.32'

The selected location is accepted by me and is generally accepted by professional surveyors as the best available evidence of the position of the original corner.

C. Description of monument for corner and accessories established to perpetuate locating the position of the corner:

C-12 Standard Kent County Monument

Nail & K.C. remon. tag on N side P. pole S 80° E 26.35'
Nail & K.C. remon. tag on E side P. pole N 10° W 137.40'
Iron N 40° West 65.32'
C/L steel stop sign post S 65° W 50.02'
C/L intersection 9' M/L East & 2' M/L South



Signed by Randy J. Kolehose
EARTH TECH

Date 8/21/95

Surveyor's Michigan License No. 25854