

\$7.00  
\$2.00 SEP 18 1995

COMMISSION

LAND CORNER RECORDATION CERTIFICATE  
Filing Requirement of Act 74, Mich. P.A. 1970  
KENT COUNTY REMONUMENTATION

For corners in

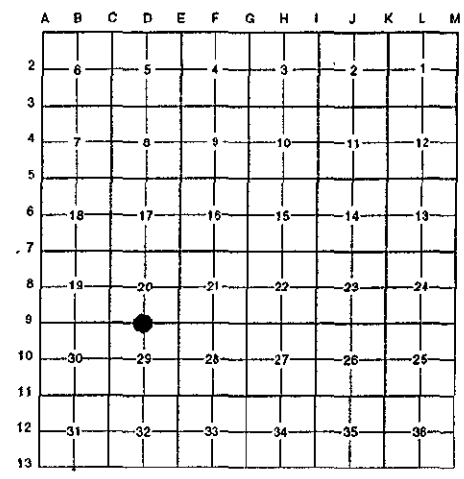
Kent (County)	Located in:	Corner Code #
1. Public Land Survey	T <u>5N</u> R <u>12W</u>	<u>D-9</u>
	T _____ R _____	_____
	T _____ R _____	_____
	T _____ R _____	_____
2. Property Controlling in Section	S _____ T _____ R _____	_____
	S _____ T _____ R _____	_____
3. Miscellaneous Property in Sec.	S _____ T _____ R _____	_____
	S _____ T _____ R _____	_____

STATE OF MICHIGAN  
COUNTY OF KENT  
RECEIVED FOR RECORD  
95 AUG 28 AM 10:49  
REG. OF DEEDS  
8581  
Register of Deeds Stamp & File Number

4. Lot No. \_\_\_\_\_, Recorded Plat \_\_\_\_\_  
5. Private Claims \_\_\_\_\_

I, Randy Kolehose, in a field survey on April 7 19 95,  
do hereby certify that under requirements of P.A. 74 Michigan P.A. of 1970, the corner points  
mentioned in lines 1 and 2 above were in conformance with regulations and rules therefore as required  
in the current manual of survey instructions of the United States Department of the interior, Bureau of  
Land Management or by a decree of a Court of Law and/or that the corner points mentioned in lines 3,  
4 and 5 above were in conformance with the rules of the Michigan Board of Land Surveyors or by a  
Decree of a Court of Law; established, re-established, monumented, re-monumented, recovered,  
found as expressed below:

NOTE: Not more than 4 corners, all in the same town and range, may be recorded  
on this certificate.



A. Description of original monument and accessories and/or subsequent restoration:

D-9	1831	G.L.O. Notes	Mullett	Set Post	P.A. 345 1990 KENT COUNTY
	1944	Wit. Map	K.C. Surveyor	Iron	PEER APPROVED 6/27/95
	1964	Wit. Map	K.C. Surveyor	Monument Box	CHAIRMAN <u>Randy Kolehose</u>
	1972	L.C.R.C. #198	Williams & Works	Found 1/2" Iron in Monument Box	
	1981	L.C.R.C. #1576	Nederveld & Jonker	Found 1/2" Iron in Mon. Box/Set K.C. Monument	
	1988	L.C.R.C. #4645	J. Bueche	K.C. Monument	

This corner was originally approved by the Kent County Remonumentation Peer Group and monumented by Nederveld & Jonker on 12/18/80 and was recorded per L.C.R.C. #1576.

B. Description of corner evidence found and/or method applied in restoring or reestablishing corner:

D-9 Found standard Kent County Monument at C/L intersection of Homrich Avenue running N-S and 92nd Street running E-W per L.C.R.C.'s #1576 and #4645 as set by Nederveld & Jonker in place of 1/2" iron in monument box they found which checked L.C.R.C. #198 and K.C. Surveyor's Wit. Map - 1944.

L.C.R.C. #1576

Nail & K.C. Remon. tag on SE side P. pole SW 39.77'  
Nail & K.C. Remon. tag on E side P. pole NNE 98.46'  
Nail & K.C. Remon. tag on N side Walnut WNW 209.11'  
SW cor. conc. porch SE 55.33'  
On centerline "X" B.T.

L.C.R.C. #4645

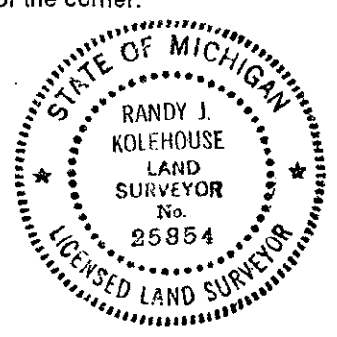
Nail & K.C. Remon tag on SE sde P pole S 60° W 39.77'  
Nail & K.C. Remon tag on E sde P pole N 20° E 98.46'  
Nail & K.C. Remon tag on N sde 18" Walnut N 80° W 209.11'  
Nail & K.C. Remon tag in S sde P pole S 70° E 91.76'  
SW cor conc porch S 45° E 55.33'  
on C/L "X" bit rd N & S & E & W

The selected location is accepted by me and is generally accepted by professional surveyors as the best available evidence of the position of the original corner.

C. Description of monument for corner and accessories established to perpetuate locating the position of the corner:

D-9 Standard Kent County Monument

Nail & K.C. remon. tag on SE side P. pole S 60° W 39.77'  
Nail & K.C. remon. tag on E side P. pole N 20° E 98.46'  
Nail & K.C. remon. tag on N side 18" Walnut N 80° W 209.11'  
Nail & K.C. remon. tag in S side P. pole S 70° E 91.76'  
SW cor. conc. porch S 45° E 55.33'  
On C/L "X" bit. rd. N & S & E & W



Signed by Randy J. Kolehose Date 8/21/95  
EARTH TECH

Surveyor's Michigan License No. 25854