

Surveyor's
REMONUMENTATION
\$7.00
\$2.00 SEP 13 1995

COMMISSION

LAND CORNER RECORDATION CERTIFICATE
Filing Requirement of Act 74, Mich. P.A. 1970
KENT COUNTY REMONUMENTATION

For corners in

	Kent (County)	Located in:	Corner Code #
1. Public Land Survey		T 5N R 12W	F-11
		T R	
		T R	
		T R	
2. Property Controlling in Section	S T R		
	S T R		
3. Miscellaneous Property in Sec.	S T R		
	S T R		

STATE OF MICHIGAN
COUNTY OF KENT
RECEIVED FOR RECORD
55 AUG 28 AM 10:51
REG. OF DEEDS
8602

Register of Deeds Stamp & File Number

4. Lot No. _____, Recorded Plat _____
5. Private Claims _____

I, Randy Kolehouse, in a field survey on April 13 19 95,
do hereby certify that under requirements of P.A. 74 Michigan P.A. of 1970, the corner points
mentioned in lines 1 and 2 above were in conformance with regulations and rules therefore as required
in the current manual of survey instructions of the United States Department of the Interior, Bureau of
Land Management or by a decree of a Court of Law and/or that the corner points mentioned in lines 3,
4 and 5 above were in conformance with the rules of the Michigan Board of Land Surveyors or by a
Decree of a Court of Law; established, re-established, monumented, re-monumented, recovered,
found as expressed below:

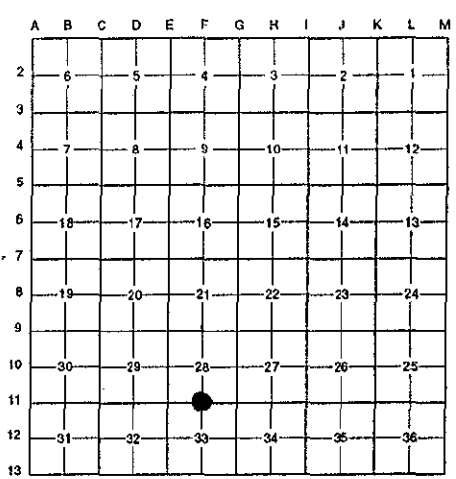
NOTE: Not more than 4 corners, all in the same town and range, may be recorded
on this certificate.

A. Description of original monument and accessories and/or subsequent restoration:

F-11	1831	G.L.O. Notes	Mullett	Set Post
	1943	Wit. Map	K.C. Surveyor	Iron
	1963	Wit. Map	K.C. Surveyor	Iron
	1981	L.C.R.C. #1632	Nederveld & Jonker	Fnd. 1/2" Iron/Set K.C. Mon.
	1988	L.C.R.C. #4651	Olson, Meyers & May	Replaced Broken Mon. with K.C. Mon.

P.A. 345 1990 KENT COUNTY

PEER APPROVED 5/29/95
CHAIRMAN Randy Kolehouse



This corner was originally approved by the Kent County Remonumentation Peer Group and monumented by Nederveld & Jonker on 3/6/81 and was recorded per L.C.R.C. #1632.

B. Description of corner evidence found and/or method applied in restoring or reestablishing corner:

F-11 Found standard Kent County Monument on C/L of 100th Street running E-W and 5.0' E of C/L of Westman Avenue per
L.C.R.C.'s #1632 and #4651 as set by Nederveld & Jonker in place of a 1/2" iron they found which checked K.C.R.C. Wit.
Map (1968) and K.C. Surveyor Wit. Map (1963).

L.C.R.C. #1632

L.C.R.C. #4651

NW corner house fnd. S30°E 87.91'
Nail & Remon. tag on N side P. pole S60° E 98.36'
"X" on East end conc. culvert N15°W 27.70'
"X" on West end conc. culvert S55°W 41.27'

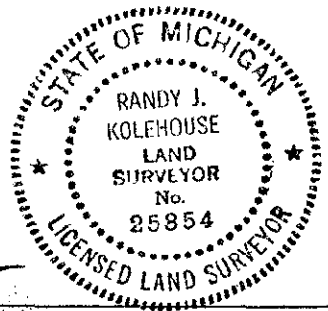
NW cor hse fndn S 30 E 87.91'
Nail & Remon tag on N sde P pole S 60 E 98.36'
"X" on E end conc culvt. N 15 W 27.70'
"X" on W end conc culvt. S 55 W 41.27'

The selected location is accepted by me and is generally accepted by professional surveyors as the best available evidence
of the position of the original corner.

C. Description of monument for corner and accessories established to perpetuate locating the position of the corner:

F-11 Standard Kent County Monument

NW cor. hse. fndn. S 30° E 87.91'
Nail & K.C. remon. tag on N side P. pole S 60° E 98.36'
"X" on E end conc. culvert N 15° W 27.70'
"X" on West end conc. culvert S 55° W 41.27'



Signed by Randy J. Kolehouse Date 8/21/95
EARTH TECH

Surveyor's Michigan License No. 25854