

\$7.00  
\$2.00

SEP 18 1995

COMMISSION

LAND CORNER RECORDATION CERTIFICATE  
Filing Requirement of Act 74, Mich. P.A. 1970  
KENT COUNTY REMONUMENTATION

For corners in

Kent  
(County)

Located in:

Corner Code #

- |                                    |      |       |     |
|------------------------------------|------|-------|-----|
| 1. Public Land Survey              | T 5N | R 12W | J-5 |
|                                    | T    | R     |     |
|                                    | T    | R     |     |
|                                    | T    | R     |     |
| 2. Property Controlling in Section | S    | T     | R   |
|                                    | S    | T     | R   |
| 3. Miscellaneous Property in Sec.  | S    | T     | R   |
|                                    | S    | T     | R   |

4. Lot No. \_\_\_\_\_, Recorded Plat \_\_\_\_\_  
5. Private Claims \_\_\_\_\_

I, Randy Kolehouse, in a field survey on April 6 19 95, do hereby certify that under requirements of P.A. 74 Michigan P.A. of 1970, the corner points mentioned in lines 1 and 2 above were in conformance with regulations and rules therefore as required in the current manual of survey instructions of the United States Department of the Interior, Bureau of Land Management or by a decree of a Court of Law and/or that the corner points mentioned in lines 3, 4 and 5 above were in conformance with the rules of the Michigan Board of Land Surveyors or by a Decree of a Court of Law; established, re-established, monumented, re-monumented, recovered, found as expressed below:

NOTE: Not more than 4 corners, all in the same town and range, may be recorded on this certificate.

A. Description of original monument and accessories and/or subsequent restoration:

J-5	1831	G.L.O. Notes	Mullett	Set Post
	1963	Wit. Map	K.C. Surveyor	Monument Box
	1971	L.C.R.C. #40	Williams & Works	Found 1/2" Iron in Mon. Box
	1980	L.C.R.C. #1542	Exxel Engineering	Found 1/2" Iron in Mon. Box/Set K.C. Monument
	1991	L.C.R.C. #6339	Chris Marschall	K.C. Monument

This corner was originally approved by the Kent County Remonumentation Peer Group and monumented by Exxel Engineering on 12/31/80 and was recorded per L.C.R.C. #1542.

B. Description of corner evidence found and/or method applied in restoring or reestablishing corner:

J-5 Found standard Kent County Monument at the C/L of 76th Street running E-W per L.C.R.C.'s #1542 and #6339 as set by Exxel Engineering in place of 1/2" iron in monument box they found which checked L.C.R.C. #40.

L.C.R.C. #1542

L.C.R.C. #6339

PK Nail & tag in top of wood fence post S28°W 36.81'

Nail & Tag W sde P.P. S 10° E 35.93'  
PK Nail & Tag in top of wood fence post S 28° W 36.82'  
Centerline top nut hydrant N 77° E 138.61'  
Nail & Tag E sde Guy Pole N 4° E 52.34'  
Centerline conc. drive to the North East more or less 26'  
Nail & Tag S sde P.P. S 73° E 93.48'

The selected location is accepted by me and is generally accepted by professional surveyors as the best available evidence of the position of the original corner.

C. Description of monument for corner and accessories established to perpetuate locating the position of the corner:

J-5 Standard Kent County Monument

Nail & K.C. remon. tag W side P. pole S 10° E 35.93'  
Nail & K.C. remon. tag on top of wood fence post S 28° W 36.82'  
C/L top nut hydrant N 77° E 138.61'  
Nail & K.C. remon. tag on E side Guy pole N 4° E 52.34'  
C/L conc. drive to the Northeast more or less 26'  
Nail & K.C. remon. tag on S side P. pole S 73° E 93.48'  
Nail & K.C. remon. tag on S side of South 4" x 6" sign post N 64° E 78.64'

Signed by Randy J. Kolehouse Date 8/21/95

Surveyor's Michigan License No. 25854

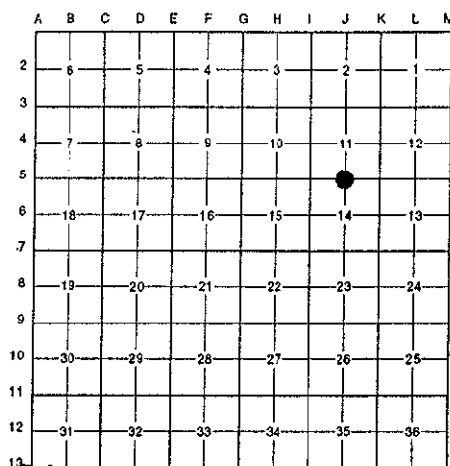
REC. OF DEEDS

95 AUG 28 AM 10:53

STATE OF MICHIGAN  
COUNTY OF KENT  
RECEIVED FOR RECORD

8639

Register of Deeds Stamp & File Number



P.A. 345 1990 KENT COUNTY

PEER APPROVED 6/27/95

CHAIRMAN Harry Thayer

