

\$7.00
\$2.00

SEP 19 1995

COMMISSION

LAND CORNER RECORDATION CERTIFICATE
Filing Requirement of Act 74, Mich. P.A. 1970
KENT COUNTY REMONUMENTATION

STATE OF MICHIGAN
COUNTY OF KENT
RECEIVED FOR RECORD
95 AUG 28 AM 10:54
REG. OF DEEDS
8649

For corners in
Kent
(County)

Located in: Corner Code #

1. Public Land Survey	T <u>5N</u> R <u>12W</u>	<u>K-6</u>
	T _____ R _____	_____
	T _____ R _____	_____
	T _____ R _____	_____
2. Property Controlling in Section	S _____ T _____ R _____	_____
	S _____ T _____ R _____	_____
3. Miscellaneous Property in Sec.	S _____ T _____ R _____	_____
	S _____ T _____ R _____	_____

Register of Deeds Stamp & File Number

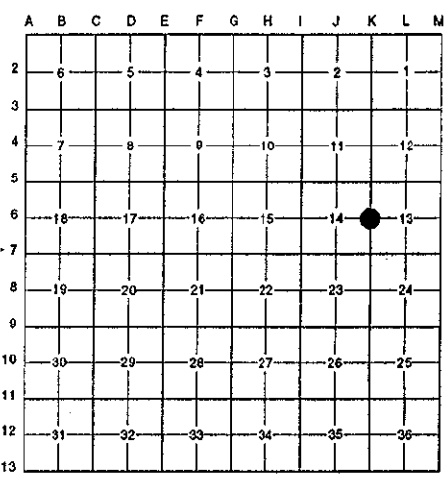
4. Lot No. _____, Recorded Plat _____
5. Private Claims _____

I, Randy Kolehouse, in a field survey on April 5 19 95, do hereby certify that under requirements of P.A. 74 Michigan P.A. of 1970, the corner points mentioned in lines 1 and 2 above were in conformance with regulations and rules therefore as required in the current manual of survey instructions of the United States Department of the interior, Bureau of Land Management or by a decree of a Court of Law and/or that the corner points mentioned in lines 3, 4 and 5 above were in conformance with the rules of the Michigan Board of Land Surveyors or by a Decree of a Court of Law; established, re-established, monumented, re-monumented, recovered, found as expressed below:

NOTE: Not more than 4 corners, all in the same town and range, may be recorded on this certificate.

A. Description of original monument and accessories and/or subsequent restoration:

K-6	1831	G.L.O. Notes	Mullett	Set Post	P.A. 345 1990 KENT COUNTY
	1939	Wit. Map	K.C. Surveyor	Stone & Iron	PEER APPROVED 8/24/95
	1962	Wit. Map	K.C. Surveyor	Stone & Iron	CHAIRMAN <u>Harry Thubert</u>
	1973	L.C.R.C. #471	Williams & Works	Found 1 1/2" Iron	
	1980	L.C.R.C. #1521	Exxel Engineering	Found 1" Iron/Set K.C. Monument	
	1992	L.C.R.C. #6348	Chris Marschall	K.C. Monument	



This corner was originally approved by the Kent County Remonumentation Peer Group and monumented by Exxel Engineering on 11/25/80 and was recorded per L.C.R.C. #1521

B. Description of corner evidence found and/or method applied in restoring or reestablishing corner:

K-6 Found rebar in newly paved roadway 1.0' West of the C/L of Clyde Park Avenue per L.C.R.C.'s #1521 and #6348 which checks location of K.C. Monument set by Exxel Engineering in place of a 1" Iron they found which checked L.C.R.C. #471.

L.C.R.C. #1521

L.C.R.C. #6348

Nail & K.C. remon tag (4' above ground) in NE'ly side
18" Maple N55°W 59.83'

Nail & Tag NE sd 24" Maple (4' above ground) N 55° W 59.73'
Nail & Tag N sd 42" Oak (4' above ground) N 81° W 57.11'
NW corner fnd. of Hse. #8015 (Block Fnd) S 73° W 99.97'
Nail & Tag SE sd U.P. N 41° E 74.57'
C/L top of steel corner Fnd. Post S 18° W 109.09'
C/L N-S bit. East more or less 1'

The selected location is accepted by me and is generally accepted by professional surveyors as the best available evidence of the position of the original corner.

C. Description of monument for corner and accessories established to perpetuate locating the position of the corner:

K-6 Set a Standard Kent County Monument

Nail & K.C. remon. tag on NE side 24" Maple (4' above ground) N 55° W 59.73'
Nail & K.C. remon. tag on N side 42" Oak (4' above ground) N 81° W 57.11'
NW corner fnd. of Hse. #8015 (Block Fnd) S 73° W 99.97'
Nail & K.C. remon. tag on SE side util. pole N 41° E 74.57'
C/L top of steel corner fence post S 18° W 109.09'
C/L N-S bit. East M/L 1'



Signed by Randy J. Kolehouse Date 8/21/95
EARTH TECH

Surveyor's Michigan License No. 25854