

SEP 13 1995

CONTRIBUTION

LAND CORNER RECORDATION CERTIFICATE
Filing Requirement of Act 74, Mich. P.A. 1970
KENT COUNTY REMONUMENTATION

For corners in

Kent (County)	Located in:	Corner Code #
1. Public Land Survey	T <u>5N</u> R <u>12W</u>	<u>K-10</u>
	T <u> </u> R <u> </u>	<u> </u>
	T <u> </u> R <u> </u>	<u> </u>
	T <u> </u> R <u> </u>	<u> </u>
2. Property Controlling in Section	S <u> </u> T <u> </u> R <u> </u>	<u> </u>
	S <u> </u> T <u> </u> R <u> </u>	<u> </u>
3. Miscellaneous Property in Sec.	S <u> </u> T <u> </u> R <u> </u>	<u> </u>
	S <u> </u> T <u> </u> R <u> </u>	<u> </u>

4. Lot No. , Recorded Plat
5. Private Claims

STATE OF MICHIGAN
COUNTY OF KENT
RECEIVED FOR RECORD
95 AUG 28 AM 10:54
REG. OF DEEDS
Lucy Bond

8653

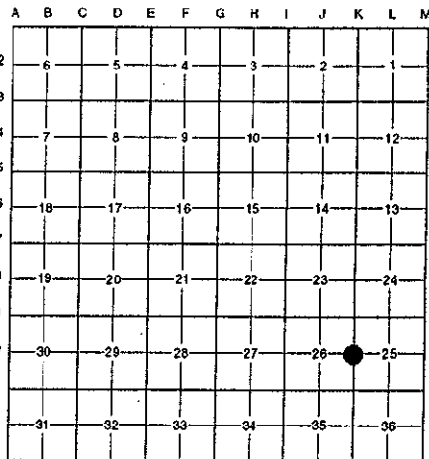
Register of Deeds Stamp & File Number

I, Randy Kolehuse, in a field survey on April 5 19 95,
do hereby certify that under requirements of P.A. 74 Michigan P.A. of 1970, the corner points
mentioned in lines 1 and 2 above were in conformance with regulations and rules therefore as required
in the current manual of survey instructions of the United States Department of the Interior, Bureau of
Land Management or by a decree of a Court of Law and/or that the corner points mentioned in lines 3,
4 and 5 above were in conformance with the rules of the Michigan Board of Land Surveyors or by a
Decree of a Court of Law; established, re-established, monumented, re-monumented, recovered,
found as expressed below:

NOTE: Not more than 4 corners, all in the same town and range, may be recorded
on this certificate.

A. Description of original monument and accessories and/or subsequent restoration:

K-10 1831	G.L.O. Notes	Mullett	Set Post	PEER APPROVED <u>6/27/95</u>
1949	Wit. Map	K.C. Surveyor	2 1/2" Iron	CHAIRMAN <i>Harry Stuber</i>
1973	L.C.R.C. #514	Exxel Engineering	1/2" Iron	
1982	L.C.R.C. #2863	Jonker Land Surveys	Found 1/2" Iron/Set K.C. Monument	
1991	L.C.R.C. #6352	Chris Marschall	K.C. Monument	



This corner was originally approved by the Kent County Remonumentation Peer Group and monumented by Jonker Land
Surveys on 5/10/82 and was recorded per L.C.R.C. #2863.

B. Description of corner evidence found and/or method applied in restoring or reestablishing corner:

K-10 Found standard Kent County Monument at the C/L of Clyde Park Avenue per L.C.R.C.'s #2863 and #6352 as set by Jonker
Land Surveys in place of a 1/2" iron they found which checked L.C.R.C. #514 and K.C. Surveyor's Wit. Map - 1949.

L.C.R.C. #2863

L.C.R.C. #6352

Remon. tag on SE side 24" Maple S30°W 52.74'
SW cor. brick house N70°E 58.8'

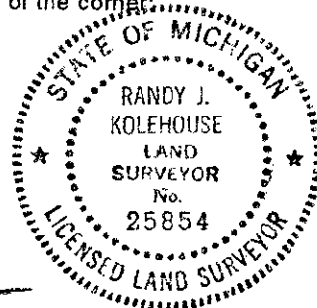
Nail & Tag SE sd P.P. S 70° E 49.28'
SW cor. Hse #9592 N 72° E 58.78'
Nail & Tag S sd 22" Maple (5' above ground) S 31° W 52.62'
Nail & Tag SE sd. 32" Oak S 64° W 30.53'
NW cor. of Hse #9592 N 55° E 69.27'

The selected location is accepted by me and is generally accepted by professional surveyors as the best available evidence
of the position of the original corner.

C. Description of monument for corner and accessories established to perpetuate locating the position of the corner:

K-10 Standard Kent County Monument

Nail & K.C. remon. tag on SE side P. pole S 70° E 49.28'
SW cor. house #9592 N 72° E 58.78'
Nail & K.C. remon. tag on S side 22" Maple (5' above ground) S 31° W 52.62'
Nail & K.C. remon. tag on SE side. 32" Oak S 64° W 30.53'
NW cor. of house #9592 N 55° E 69.27'



Signed by *Randy J. Kolehuse* Date 8/21/95

EARTH TECH

Surveyor's Michigan License No. 25854