

JAN 23 1996

LAND CORNER RECORDATION CERTIFICATE  
Filing Requirement of Act 74, Mich. P.A. 1970  
KENT COUNTY REMONUMENTATION

For corners in

COMMISSION

Kent  
(County)

Located in:

Corner Code #

- |                                       |      |       |     |
|---------------------------------------|------|-------|-----|
| 1. Public Land Survey                 | T 5N | R 12W | J-4 |
|                                       | T    | R     |     |
|                                       | T    | R     |     |
|                                       | T    | R     |     |
| 2. Property Controlling<br>in Section | S    | T     | R   |
|                                       | S    | T     | R   |
| 3. Miscellaneous<br>Property in Sec.  | S    | T     | R   |
|                                       | S    | T     | R   |

REG. OF DEEDS

*Lucy Bond*

95 DEC 28 PM 2:20

STATE OF MICHIGAN  
COUNTY OF KENT  
RECEIVED FOR RECORD

8893

Register of Deeds Stamp & File Number

4. Lot No. \_\_\_\_\_, Recorded Plat \_\_\_\_\_  
5. Private Claims \_\_\_\_\_

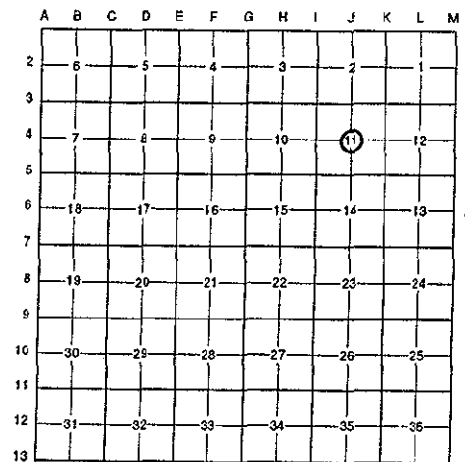
I, Randy Kolehhouse, in a field survey on April 21 19 95, do hereby certify that under requirements of P.A. 74 Michigan P.A. of 1970, the corner points mentioned in lines 1 and 2 above were in conformance with regulations and rules therefore as required in the current manual of survey instructions of the United States Department of the interior, Bureau of Land Management or by a decree of a Court of Law and/or that the corner points mentioned in lines 3, 4 and 5 above were in conformance with the rules of the Michigan Board of Land Surveyors or by a Decree of a Court of Law; established, re-established, monumented, re-monumented, recovered, found as expressed below:

NOTE: Not more than 4 corners, all in the same town and range, may be recorded on this certificate.

A. Description of original monument and accessories and/or subsequent restoration:

J-4 This corner was not originally set by the G.L.O.

NA	Wit. Map	K.C. Surveyor	Iron
1975	L.C.R.C. #896	Exxel Engineering	Set 3/4" Capped Iron
1993	L.C.R.C. #6780	Chris Marschall	Found and Accepted Exxel Iron which Fits 1/4 Line Int./Set K.C. Monument



B. Description of corner evidence found and/or method applied in restoring or reestablishing corner:

J-4 Found standard Kent County Monument on line of fences running East and South per L.C.R.C. #6780A as set by C. Marschall in place of an Exxel capped iron they found to fit the 1/4 line intersection. K.C. Monument is 0.15' North of intersection of 1/4 (note: Also found iron 0.48' West). Accepted Kent County Monument as Center Section.

L.C.R.C. #6780A

Nail & Tag in SW side 24" Maple S 44° E 166.65'  
Nail & Tag in S side 8" Elm N 66° E 5.94'  
Nail & Tag in NW corner fence post RR tie S 15° W 6.55'  
Nail & Tag in E side 10" W. Cherry S 42° W 32.58'

P.A. 345 1990 KENT COUNTY

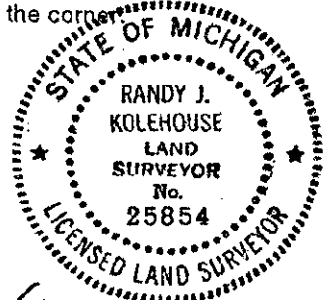
PEER APPROVED 8/24/95

CHAIRMAN *Harry Huber*

C. Description of monument for corner and accessories established to perpetuate locating the position of the corner:

J-4 Standard Kent County Monument

Nail & K.C. remon. tag in SW side 24" Maple S 44° E 166.65'  
Nail & K.C. remon. tag in S side 8" Elm N 66° E 5.94'  
Nail & K.C. remon. tag in NW corner RR tie fence post S 15° W 6.55'  
Nail & K.C. remon. tag in E side 10" W. Cherry S 42° W 32.58'



Signed by *Randy J. Kolehhouse* Date 12/22/95

EARTH TECH

Surveyor's Michigan License No. 25854