

KENT COUNTY REMONUMENTATION

KENT COUNTY REMONUMENTATION

OCT 28 1994

COURTLAND TWP.

STATE OF MICHIGAN
COUNTY OF KENT
RECEIVED FOR RECORD

COMMISSIONER

LAND CORNER RECORDATION CERTIFICATE

Filing Requirement of Act 74, Mich. P.A. 1970

94 JUL -5 PM 3:12

For corners in
KENT COUNTY
(County)

Located In:

Corner Code =#

1. Public Land Survey

T R

Other Code

T R

#4

T R

T R

2. Property Controlling
In Section

S 27 T 9N R 10W

Wit. Mon.

S T R

on E-W 1/4

3. Miscellaneous
Property in Sec.

S T R

line

REG. OF DEEDS

6965

Register of Deeds Stamp & File Number

4. Lot No. , Recorded Plat

5. Private Claims

	A	B	C	D	E	F	G	H	I	J	K	L	M
2	6		5		4		3		2		1		
3													
4	7		8		9		10		11		12		
5													
6	18		17		16		15		14		13		
7													
8	19		20		21		22		23		24		
9													
10	30		29		28		27		26		25		
11													
12	31		32		33		34		35		36		
13													

I, William R. Byl, in a field survey on Feb. 18, 19 94, do hereby certify that under requirements of P.A. 74, Michigan P.A. of 1970, the corner points mentioned in lines 1 and 2 above were in conformance with regulations and rules therefore as required in the current manual of survey instructions of the United States Department of the Interior, Bureau of Land Management or by a decree of a Court of Law and/or that the corner points mentioned in lines 3, 4 and 5 above were in conformance with the rules of the Michigan Board of Land Surveyors or by a Decree of a Court of Law; established, re-established, monumented, re-monumented, recovered, found as expressed below:

NOTE: Not more than 4 corners, all in the same town and range, may be recorded on this certificate.

A. Description of original monument and accessories and/or subsequent restoration:

Nothing ever set by GLO

No other information available from the County Surveyor's Office, other surveying firms or any other sources.

P.A. 345 1990 KENT COUNTY
PEER APPROVED 3/24/94
CHAIRMAN Harry Hubert

B. Description of corner evidence found and/or method applied in restoring or reestablishing corner:

Found irons along the E-W 1/4 line and along Hessler Drive N & S of the E-W 1/4 line as set and used in various surveys by Williams & Works (1919-1976). Irons are all in agreement with each other more or less. Also found an iron at what appears to be the Southeast corner of "MYERS LAKE PARK" (Liber 22, Page 23) described as being 16.5' North and 229.1' West of the Central 1/4 corner, measured 16.36' North and 417.4' West of the Central 1/4 corner. Held an iron pipe found at the West line of Hessler Drive and the E-W 1/4 as established by Williams and Works as a reference point on the E-W 1/4 line of Section 27.

See sketch reverse side-corner "H"

C. Description of monument for corner and accessories established to perpetuate locating the position of the corner:

Replaced iron pipe with "Witness Corner" Kent County Monument

NE cor. fdn. Hse. #7502

S40°W 67.70'

Set Nail & KC Remon. tag S. side 30" Oak

S80°W 27.51'

Set Nail & KC Remon. tag E. side 36" Oak

N10°W 16.22'

Set Nail & KC Remon. tag S. side 30" Oak

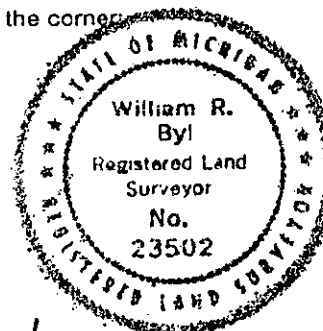
S75°E 43.59'

Set Nail & KC Remon. tag E. side Power Pole

S45°E 55.40'

Central 1/4 corner Sec. 27 (Kent Co. Mon.)

East 461.59'



Signed by

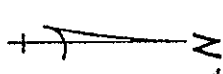
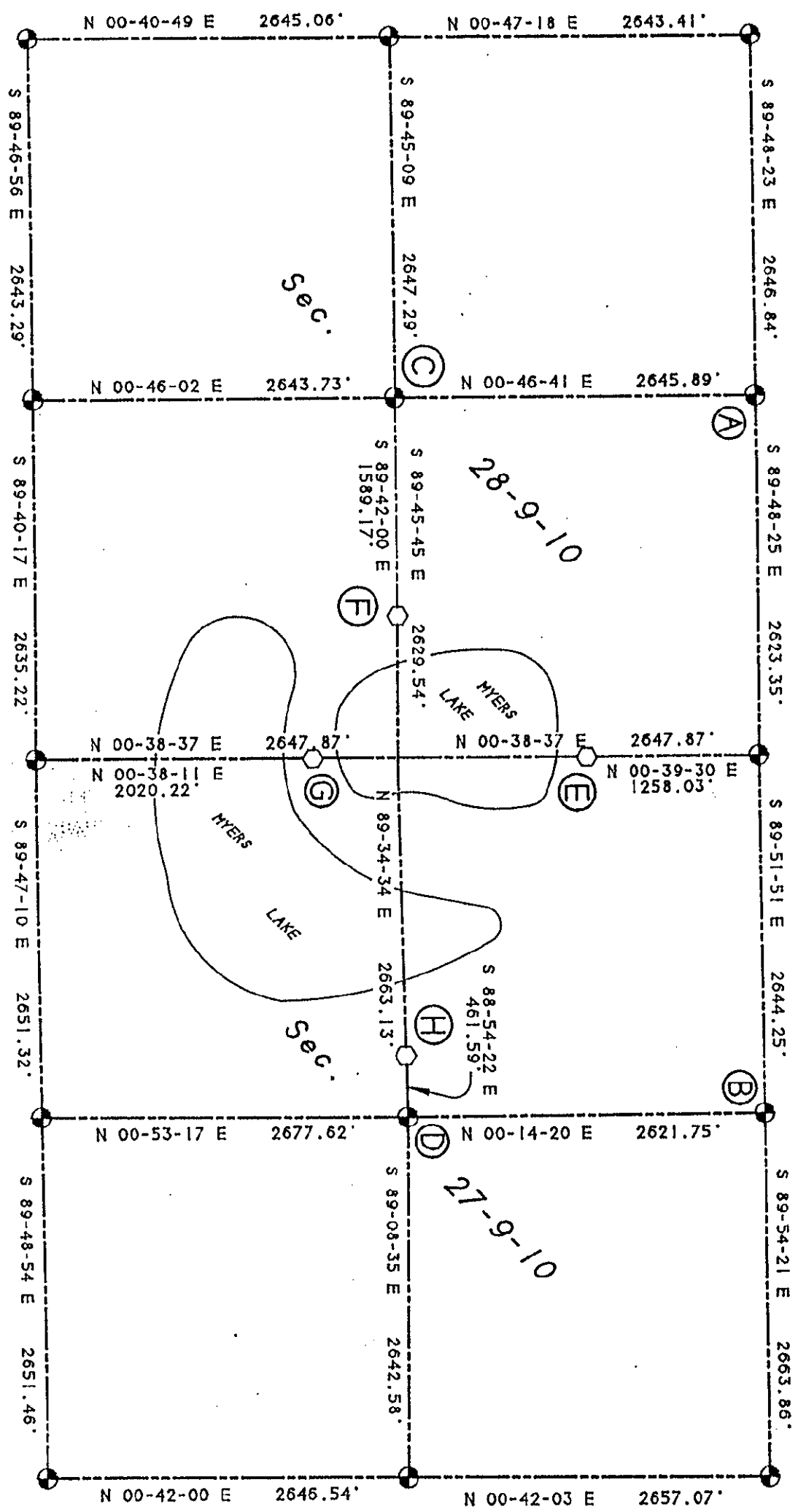
William R. Byl

Date

06.17.94

Surveyor's Michigan License No.

23502



SECTION 27 & 28, TOWN 9 NORTH, RANGE 10 WEST
COURTLAND TWP., KENT COUNTY, MICHIGAN.
SCALE: 1" = 1000'
● - KENT COUNTY MONUMENT
○ - KENT COUNTY REFERENCE MONUMENT
BEARING DATUM PER SOLAR OBSERVATION

PREPARED BY:
WILLIAM R. BYL, INC.
REGISTERED LAND SURVEYORS
1549 KALAFAZOO SE
GRAND RAPIDS, MI. 49507