

SURVEY & REMONUMENTATION

\$7.00
\$2.00

MAR 08 1999

KENT COUNTY REMONUMENTATION

LAND CORNER RECORDATION CERTIFICATE Filing Requirement of Act 74, Mich. P.A. 1970

For corners in SECTION

KENT COUNTY
(County)

Located in:

Corner Code #

1. Public Land Survey

T R
T R
T R
T R

2. Property Controlling in Section

S 6 T9N R11W Wit Mon on
S T R N-S 1/4 line

3. Miscellaneous Property in Sec.

S T R
S T R

STATE OF MICHIGAN
COUNTY OF KENT
RECEIVED FOR RECORD
98 NOV 16 AM 8:00
REG. OF DEEDS
other code 10907
Register of Deeds Stamp & File Number

4. Lot No. , Recorded Plat
5. Private Claims

I, Kirk Breitels, in a field survey on Oct. 16, 1998 do hereby state that under requirements of P.A. 74, Michigan P.A. of 1970, the corner points mentioned in lines 1 and 2 above were in conformance with regulations and rules therefore as required in the current manual of survey instructions of the United States Department of the Interior, Bureau of Land Management or by a decree of a Court of Law and for that the corner points mentioned in lines 3, 4 and 5 above were in conformance with the rules of the Michigan Board of Land Surveyors or by a Decree of a Court of Law; established, re-established, monumented, recovered, found as expressed below:

NOTE: Not more than 2 corners, all in the same town and range, may be recorded on this certificate.

	A	B	C	D	E	F	G	H	I	J	K	L	M
1													
2		6		5		4		3		2		1	
3													
4		7		8		9		10		11		12	
5													
6		18		17		16		15		14		13	
7													
8		19		20		21		22		23		24	
9													
10		30		29		28		27		26		25	
11													
12		31		32		33		34		35		36	
13													

A. Description of original monument and accessories and/or subsequent restoration:

1837	GLO	Whitcomb	Not Set
1953	Surveys	Williams & Works	Set reference corner (B-1 falls in lake) near shore of lake on a line extended from the South 1/4 cor. through the Central 1/4 cor. - 363.85' South of computed B-1. Jog = 257.0'
1994	LCRC #8046	W. Glaza	Set Reference Iron on N-S 1/4 line at using prorated GLO distances (actual B-1 falls in a lake) 488.84' South of computed B-1. Jog = 381.50'

12" Oak S10°W 13.54' 24" Oak N90°E 20.39' 18" Oak N05°W 8.90' 12" Oak S60°E 3.64'

B. Description of corner evidence found and/or method applied in restoring or reestablishing corner:

Found Capped Rerod (Glaza) per LCRC #8046 - measurements fit prorated to GLO±. Meas. 488.57' South of compute B-1 and creates a measured jog of 381.40'

Found Iron Pipe per 1953 Williams & Works - 0.6' West of ext. line from S 1/4 cor - C 1/4 cor. 366.80' South of computed B-1 and creates a measured jog of 256.86'. Norm Ochs used Williams & Works information and Irons to subdivide the E 1/2 NE 1/4.

Based on measurements along the entire township line, the Capped Rerod (Glaza) per LCRC#8046 is accepted by me and is generally accepted by professional surveyors as the best available evidence of the position of the corner.

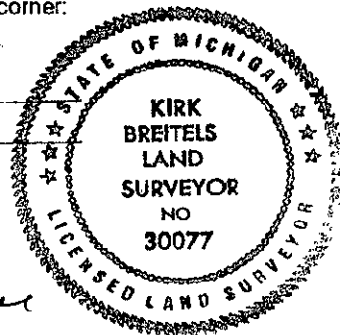
C. Description of monument for corner and accessories established to perpetuate locating the position of the corner:

Set Kent County Witness Monument in place of the Capped Rerod (Glaza).
Nail & KC Remon. tag W. side 14" Oak S10°W 13.54'
Nail & KC Remon. tag N. side 24" Oak N90°E 20.39'
Nail & KC Remon. tag W. side 20" Oak N05°W 8.90'
Nail & KC Remon. tag SW side 14" oak S60°E 3.64'
Edge of Ke-Wag-A-Wan Lake is North 22' ± and West 28' ±

P.A. 345 1990 KENT COUNTY

PEER APPROVED 10/22/98

CHAIRMAN Harry J. Huber



Signed by

Kirk Breitels

Date

11/12/98

Surveyor's Michigan License No.

30077