

SURVEY & REMONUMENTATION

MAR 08 1999

KENT COUNTY REMONUMENTATION

LAND CORNER RECORDATION CERTIFICATE Filing Requirement of Act 74, Mich. P.A. 1970

\$7.00
\$2.00

SECTION

For corners in

KENT COUNTY
(County)

Located in:

Corner Code #

1. Public Land Survey

T R
T R
T R
T R

2. Property Controlling
in Section

S 25 T 9N R 12W Wit Mon on
S T R E-W 1/4 line

3. Miscellaneous
Property in Sec.

S T R
S T R

4. Lot No. , Recorded Plat

5. Private Claims

I, Kirk Breitels, in a field survey on Sept. 29, 1998 do hereby state that under requirements of P.A. 74, Michigan P.A. of 1970, the corner points mentioned in lines 1 and 2 above were in conformance with regulations and rules therefore as required in the current manual of survey instructions of the United States Department of the Interior, Bureau of Land Management or by a decree of a Court of Law and/or that the corner points mentioned in lines 3, 4 and 5 above were in conformance with the rules of the Michigan Board of Land Surveyors or by a Decree of a Court of Law; established, re-established, monumented, recovered, found as expressed below:

NOTE: Not more than 2 corners, all in the same town and range, may be recorded on this certificate.

A. Description of original monument and accessories and/or subsequent restoration:

1837
1946-60

GLO
Survey

Whitcomb
Williams & Works

Not Set
Set and used Iron at 1/8 corner on E-W 1/4 line between
W 1/4 corner and C 1/4 corner (Stone)

P.A. 345 1990 KENT COUNTY

PEER APPROVED 10/22/98

CHAIRMAN Harry Fisher

B. Description of corner evidence found and/or method applied in restoring or reestablishing corner:

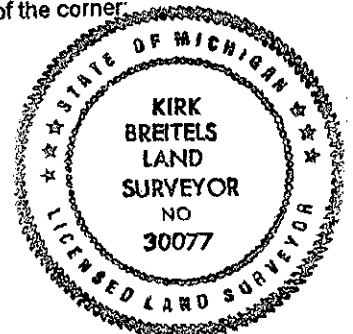
Did not find an Iron at 1/8 corner on the E-W 1/4 line as set by Williams & Works. Established 1/8 corner per Williams & Works information and Irons found.

This location fall less than a 1' off fence lines N-S and E-W

The established 1/8 corner as described above is accepted by me and is generally accepted by professional surveyors as the best available evidence of the position of the Witness Corner.

C. Description of monument for corner and accessories established to perpetuate locating the position of the corner:

Set Kent County Witness Monument at 1/8 corner described above
Nail & KC Remon. tag E. side 24" Oak N00°E 65.84'
Nail & KC Remon. tag N. side 30" Oak S80°E 54.33'
Nail & KC Remon. tag W. side 10" Stump S45°E 48.88'
Nail & KC Remon. tag E. side 30" Oak S00°E 72.45'
Face of 1' diameter fence post S60°E 0.45'



Signed by

Kirk Breitels

Surveyor's Michigan License No. 30077

Date

12/15/98