

# SURVEY & REMONUMENTATION

MAY 09 1996

KENT COUNTY REMONUMENTATION

COMMISSION

LAND CORNER RECORDATION CERTIFICATE

Filing Requirement of Act 74, Mich. P.A. 1970

For corners in

Kent

(County)

Located In:

Spencer Township

Corner Code #

1. Public Land Survey

T R

T R

T R

T R

2. Property Controlling  
in Section

S 12/13 T 10N R 9W

S T R

3. Miscellaneous

S T R

Property in Sec.

S T R

4. Lot No. , Recorded Plat

5. Private Claims

Wit. Mon.

STATE OF MICHIGAN  
COUNTY OF KENT  
RECEIVED FOR RECORD

93 OCT -4 PM 1:53

REG. OF DEEDS

6849

Register of Deeds Stamp & File Number

I, Rodney D. Unema, in a field survey on September 7, 19 93

do hereby certify that under requirements of P.A. 74, Michigan P.A. of 1970, the corner points mentioned in lines 1 and 2 above were in conformance with regulations and rules therefore as required in the current manual of survey instructions of the United States Department of the Interior, Bureau of Land Management or by a decree of a Court of Law and/or that the corner points mentioned in lines 3, 4 and 5 above were in conformance with the rules of the Michigan Board of Land Surveyors or by a Decree of a Court of Law; established, re-established, monumented, re-monumented, recovered, found as expressed below:

**NOTE:** Not more than 4 corners, all in the same town and range, may be recorded on this certificate.

A. Description of original monument and accessories and/or subsequent restoration:

GLO notes: E on Random between 12 & 13, 10.00 ch to lake, 45.56 ch across lake by traverse, 80.00 ch intersect E boundary at post: West on corrected line 34.44 ch set post on E bank of lake.

1930 Bristol Park is platted to the North line of Section 13 West of Bass Lake Ave.

B. Description of corner evidence found and/or method applied in restoring or reestablishing corner:

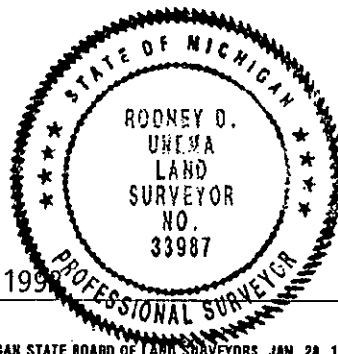
Found irons along N'y line of outlot for road, Bristol Park, held iron at intersection of W'y line of Bass Lake Rd. & North line of Bristol Park for line from NE cor., Section 13.  
NE Cor., Section 13 - found iron = 2238.24'

C. Description of monument for corner and accessories established to perpetuate locating the position of the corner:

Set Std. K.C. Harrison Mon. (4"x30") as wit. mon. in place of 3/4" iron pipe found on N. line of Bristol Park. Flush with ground  
East edge Bass Lake West +56'  
NE cor., Section 13 N89°54'38"E 2238.24'  
Set nail & KC tag in W sde 36" Oak N20°E 22.70'  
Set nail & KC tag in N sde P. Pole S75°E 71.22'  
SW fndn cor. of house #16409 N60°W 24.35'  
NE cor of house #16399 (corner of siding), S10°E 6.16'  
E-W box wire fence South 0.8'  
C/L of Bass Lake Ave. pavement East 34'

Signed by Rodney D. Unema  
Surveyor's Michigan License No. 33987

Date September 10, 1993



FORM APPROVED BY MICHIGAN STATE BOARD OF LAND SURVEYORS, JAN. 28, 1971  
REVISED MAY 14, 1975  
REVISED JAN., 1983

Note: See Survey L 257 P 35 for Survey map

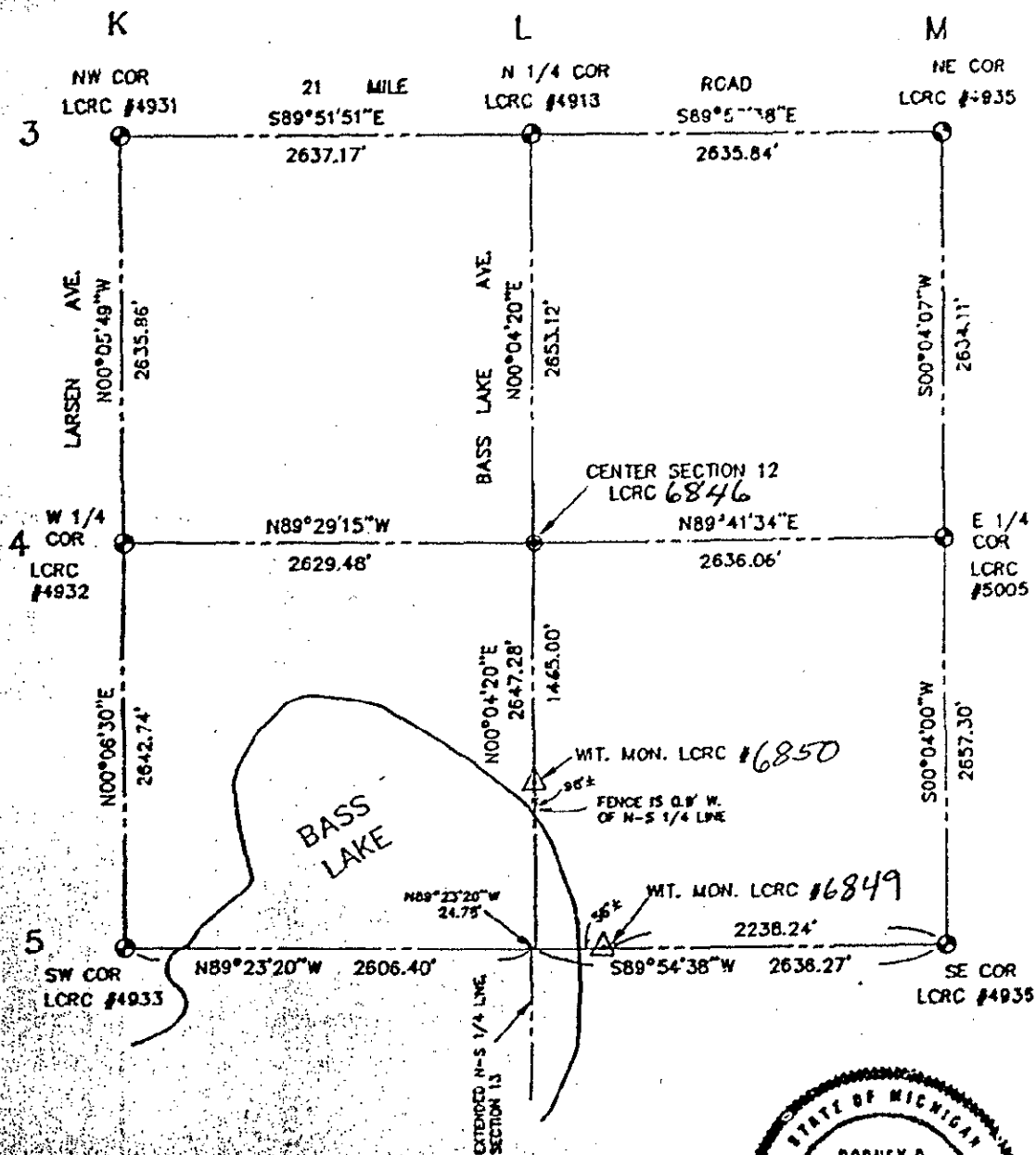
SURVEY OF:  
SECTION 12, T10N, R9W  
SPENCER TOWNSHIP, KENT COUNTY, MICHIGAN

**LEGEND:**

- ⊙ - EXISTING HARRISON MONUMENT
- - SET HARRISON MONUMENT AT EXISTING CENTER OF SECTION
- △ - SET HARRISON MONUMENT AS WITNESS MONUMENT

BEARINGS ARE BASED ON SOLAR OBSERVATION

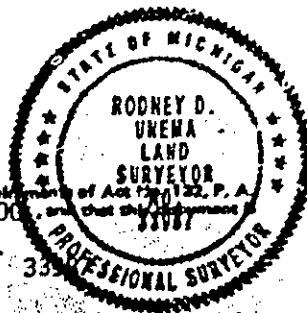
1" = 1000'



## SURVEYOR'S CERTIFICATE

I hereby certify that this map has been prepared in conformance with the requirements of Act No. 132, P. A. 1970, and of Act 280, P. A. 1972, and that the survey error of closure is 1:10,000, and that the survey was conducted in accordance with the provisions of the Act.

Podney D. Unoma



- |    |                        |
|----|------------------------|
| ED | Decoded dimension      |
| EM | Measured dimension     |
| EP | Plotted dimension      |
| ES | Set iron spikes        |
| EO | Found iron spikes      |
| EU | Concrete reinforcement |
| EW | Found wire             |



**exxel engineering inc.**

6252 CLYDE PARK, S.W. • GRAND RAPIDS, MI 49509-9724

PHONE (619) 531-3000

File No: 931189A Date: September 28, 1993