

\$7.00
\$2.00

KENT COUNTY REMONUMENTATION

LAND CORNER RECORDATION CERTIFICATE

Filing Requirement of Act 74, Mich. P.A. 1970

For corners in
KENT COUNTY
(County)

Located In:

Corner Code #

1. Public Land Survey

T 10N R 10W

J-12

2. Property Controlling
in Section

S T R

3. Miscellaneous

S T R

Property in Section

S T R

4. Lot No. , Recorded Plat

5. Private Claims

REG. OF DEEDS

8534

95 JUL 11 PM 1:53

STATE OF MICHIGAN
COUNTY OF KENT
RECEIVED FOR RECORD

Register of Deeds Stamp & File Number

I, Kirk Breitels, in a field survey on July 5, 19 95

do hereby certify that under requirements of P.A. 74, Michigan P.A. of 1970, the corner points mentioned
s 1 and 2 above were in conformance with regulations and rules therefore as required in the current
manual of survey instructions of the United States Department of the Interior, Bureau of Land
Management or by a decree of a Court of Law and/or that the corner points mentioned in lines 3, 4 and
5 above were in conformance with the rules of the Michigan Board of Professional Surveyors or by a
Decree of a Court of Law; established, re-established, monumented, re-monumented, recovered, found
as expressed below:

NOTE: Not more than 4 corners, all in the same town and range, may be recorded
on this certificate.

A. Description of original monument and accessories and/or subsequent restoration:

J-12 1837 GLO
1959 Williams & Works
1968 Consumers Power Co.
1978 LCRC #1236

By

Not Set
Set Iron at "X" 1/4 lines
Set Pipe at "X" 1/4 lines
Iron Pipe-Bent, Set Rerod

P.A. 345 1990 KENT COUNTY

PEER APPROVED 6/22/95

CHAIRMAN Harry Hubeir

B. Description of corner evidence found and/or method applied in restoring or reestablishing corner:

J-12 Found Re-rod per witnesses of Williams & Works, Consumers Power Co. & LCRC #1236.
Said Rerod is 0.1' N. and 0.4' W. of the "X" of 1/4 lines. This Rerod has also
been used in other surveys by various surveyors since 1978.

Williams & Works

Consumers Power Co.

LCRC #1236

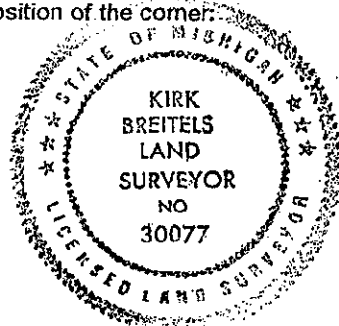
20" Elm	ESE	90.9'	18" Oak	ENE	89.9'	8" Cl. Maple	SSW	37.56'
24" Maple	SE	69.2'	24" Maple	SE	69.2'	36" Maple	SE	68.93'
12" Oak	NW	65.45'	12" Oak	NW	65.45'	10" Aspen	NNW	44.16'
18" Oak	ENE	89.9'	NE cor. hse.	SSW	90.25'	24" Tw. Oak	ENE	89.48'
5' N. of C/L grav. rd.			NW cor. hse.	SW	102.0'			
2' E. of fence line S.								

The Rerod is accepted by me and is generally accepted by professional surveyors as the
best available evidence of the position of the corner.

C. Description of monument for corner and accessories established to perpetuate locating the position of the corner:

J-12 Set Standard Kent County Monument in place of Rerod

Set Nail & KC Remon. tag S. side 15" Maple	N60°W	51.93'
Set Nail & KC Remon. tag E. side 36" Maple	S10°W	38.83'
Set Nail & KC Remon. tag N. side 36" Maple	S60°E	70.20'
Set Nail & KC Remon. tag W. side 15" Oak	N20°E	28.12'
NE cor. house (wood siding)	S20°W	90.48'
NW cor. house (wood siding)	S50°W	102.26'
C/L Grav. Rd. is 5' South m/l		



Signed by

Kirk Breitels

Date

7/6/95

Surveyor's Michigan License No. 30077