

\$7.00
\$2.00

JAN 22 2000

KENT COUNTY REMONUMENTATION

SECTION

LAND CORNER RECORDATION CERTIFICATE
Filing Requirement of Act 74, Mich. P.A. 1970

For corners in

KENT COUNTY

(County)

Located In:

Corner Code #

Tyrone Twp.

1. Public Land Survey

T 10N R 12W

D-2

2. Property Controlling
in Section

S

T R

3. Miscellaneous
Property in Sec.

S

T R

4. Lot No. , Recorded Plat

5. Private Claims

I, Kirk Breitels, in a field survey on Oct. 8, 19 99 do hereby state that under requirements of P.A. 74, Michigan P.A. of 1970, the corner points mentioned in lines 1 and 2 above were in conformance with regulations and rules therefore as required in the current manual of survey instructions of the United States Department of the Interior, Bureau of Land Management or by a decree of a Court of Law and/or that the corner points mentioned in lines 3, 4 and 5 above were in conformance with the rules of the Michigan Board of Land Surveyors or by a Decree of a Court of Law; established, re-established, monumented, recovered, found as expressed below:

NOTE: Not more than 2 corners, all in the same town and range, may be recorded on this certificate.

A. Description of original monument and accessories and/or subsequent restoration:

D-2 1837 GLO Not Set
1973 Williams & Works Held computed intersection of 1/4 lines - no corner set
Kent Co. Wits No information
1979 LCRC #1262 Campbell Set 1/2" Rerod at intersection of 1/4 lines.
12" Apple N40°W 70.27' "T" Iron West 33.00' 12" Maple S45°W 39.46'

P.A. 345 1990 KENT COUNTY
PEER APPROVED 10/29/99
CHAIRMAN Harry Huber

B. Description of corner evidence found and/or method applied in restoring or reestablishing corner:

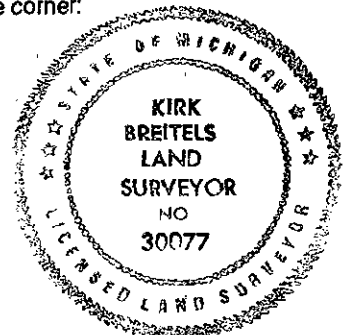
D-2 Found 1/2" Rerod per the following remaining witnesses:
"T" Iron West 32.91' Nail in 24" Maple S45°W 39.56'

Said 1/2" Rerod is 0.3' N. & 0.2' W. of intersection of 1/4 lines and has been agrees with surveys by Williams & Works, Fricke, Campbell, All Points, Roosien and Glaza.

The 1/2" Rerod is accepted by me and is generally accepted by professional surveyors as the best available evidence of the position of the corner.

C. Description of monument for corner and accessories established to perpetuate locating the position of the corner:

D-2 Set Standard Kent County Monument in place of the 1/2" Rerod
"T" Iron with Cap West 32.91'
Nail & KC Remon. tag SE side 24" Maple S45°W 39.56'
Nail & KC Remon. tag E. side 24" Maple S20°W 97.26'
Nail & KC Remon. tag N. side P. Pole S65°E 19.84'
Nail & KC Remon. tag E. side P. Pole N20°E 99.64'



Signed by Kirk Breitels

Date 12/6/99

Surveyor's Michigan License No. 30077