

MAY 22 2000

KENT COUNTY REMONUMENTATION

SECTION

LAND CORNER RECORDATION CERTIFICATE  
Filing Requirement of Act 74, Mich. P.A. 1970

For corners in

KENT COUNTY

(County)

Located In:

Corner Code #

Tyrone Twp.

1. Public Land Survey

T10N R12W

D-8

2. Property Controlling  
in Section

S T R

3. Miscellaneous  
Property in Sec.

S T R

4. Lot No. , Recorded Plat

5. Private Claims

I, Kirk Breitels, in a field survey on Aug. 23, 19 99 do hereby state that under requirements of P.A. 74, Michigan P.A. of 1970, the corner points mentioned in lines 1 and 2 above were in conformance with regulations and rules therefore as required in the current manual of survey instructions of the United States Department of the Interior, Bureau of Land Management or by a decree of a Court of Law and /or that the corner points mentioned in lines 3, 4 and 5 above were in conformance with the rules of the Michigan Board of Land Surveyors or by a Decree of a Court of Law; established, re-established, monumented, recovered, found as expressed below:

NOTE: Not more than 2 corners, all in the same town and range, may be recorded on this certificate.

A. Description of original monument and accessories and/or subsequent restoration:

D-8 1837 GLO  
1954-68 Williams & Works  
Kent Co. Wits

Not Set  
Computed distances 2609.7 to E 1/4 cor. and 2604.6 to W 1/4 cor.  
No information

P.A. 345 1990 KENT COUNTY

PEER APPROVED 8/26/99

CHAIRMAN Harry Hubert

B. Description of corner evidence found and/or method applied in restoring or reestablishing corner:

D-8 Found nothing at corner - location is in orchard area all directions. Established intersection of 1/4 lines.

Distance to E 1/4 cor. = 2609.79' (WW - 2609.7')

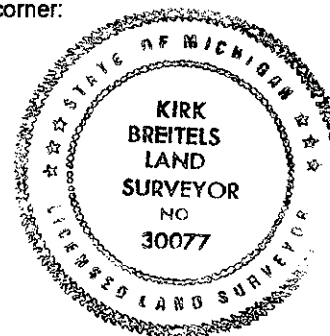
Distance to W 1/4 cor. = 2604.38' (WW - 2604.6')

The Intersection of 1/4 lines is accepted by me and is generally accepted by professional surveyors as the best available evidence of the position of the corner.

C. Description of monument for corner and accessories established to perpetuate locating the position of the corner:

D-8 Set Standard Kent County Monument at the Intersection of 1/4 lines.

Nail & KC Remon. tag SE side P. Pole S40°W 142.13'  
Nail & KC Remon. tag NW side P. Pole N40°E 104.96'  
Nail & KC Remon. tag N. side 6" Apple S85°E 31.36'  
Nail & KC Remon. tag SW side 6" Apple S35°E 51.50'  
C/L 1" Apple - at orchard corner N40°W 42'  
C/L N-S gravel orchard road is West 8' ±  
C/L 2-track orchard trail to West is North 20' ±



Signed by Kirk Breitels

Date 12/6/99

Surveyor's Michigan License No. 30077