

RECEIVED
KENT COUNTY
RECORDS

\$7.00
\$2.00

MAY 22 2000

KENT COUNTY REMONUMENTATION

LAND CORNER RECORDATION CERTIFICATE
Filing Requirement of Act 74, Mich. P.A. 1970

SECTION

For corners in

KENT COUNTY

(County)

Located In:

Corner Code #

Tyrone Twp.

1. Public Land Survey

T 10N R 12W

D-11

2. Property Controlling
in Section

S T R

3. Miscellaneous

S T R

Property in Sec.

S T R

4. Lot No. , Recorded Plat

5. Private Claims

I, Kirk Breitels, in a field survey on Jan. 19, 19 99 do hereby state that under requirements of P.A. 74, Michigan P.A. of 1970, the corner points mentioned in lines 1 and 2 above were in conformance with regulations and rules therefore as required in the current manual of survey instructions of the United States Department of the Interior, Bureau of Land Management or by a decree of a Court of Law and/or that the corner points mentioned in lines 3, 4 and 5 above were in conformance with the rules of the Michigan Board of Land Surveyors or by a Decree of a Court of Law; established, re-established, monumented, recovered, found as expressed below:

NOTE: Not more than 2 corners, all in the same town and range, may be recorded on this certificate.

A. Description of original monument and accessories and/or subsequent restoration:

D-11 1837	GLO	Whitcomb	Set Post
	Kent Co. Wits		1" Iron
1971	LCRC #88	Spicer	"T" Iron in Mon. Box
1982	LCRC #2648	Jonker	Set Kent County Monument in Mon. Box
1994	LCRC #7583	J. Glaza	Kent County Monument

P.A. 345 1990 KENT COUNTY

PEER APPROVED 2/25/99

CHAIRMAN [Signature]

The position of this corner was previously approved by the Kent County Remonumentation Peer Group, monumented by Robert J. Jonker on 2-8-82 and was recorded per LCRC #2648.

B. Description of corner evidence found and/or method applied in restoring or reestablishing corner:

D-11 Found Kent County Monument (Harrison) per witnesses from above LCRC as set by Robert J. Jonker in place of the "T" Iron he found inside a Mon. Box. Said "T" Iron checks with Kent Co. Wits. and LCRC #88.

LCRC #2648

LCRC #7583

Nail & Remon. tag P. Pole N75°W 164.4'
Nail & Remon. tag Tw. 4" Elm S72°E 102.43'
Nail & Remon. tag 6" Elm S00°E 52.6'
Nail & Remon. tag 24" Maple S82°W 182.45'
Nail & MSHD tag P. Pole N06°W 35.45'
C/L pavement 0.5' South

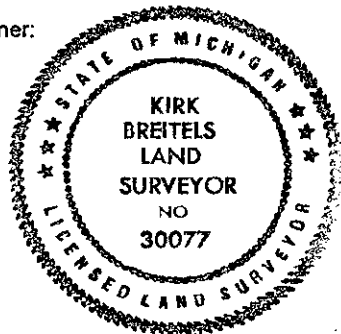
Nail & Remon. tag P. Pole N75°W 164.54'
Nail & Remon. tag 24" Maple S82°W 182.48'
Nail & MSHD tag P. Pole N06°W 35.53'
Nail & Remon. tag P. Pole S20°E 50.43'
Nail & Remon. tag 10" Box Elder N65°E 129.96'

The selected location is accepted by me and is generally accepted by professional surveyors as the best available evidence of the position of the original corner.

C. Description of monument for corner and accessories established to perpetuate locating the position of the corner:

D-11 Standard Kent County Monument

Nail & KC Remon. tag S. side P. Pole	N75°W 164.40'
Nail & KC Remon. tag W. side P. Pole	S10°W 84.57'
Nail & MSHD tag E. side P. Pole	N06°W 35.53'
Nail & KC Remon. tag W. side P. Pole	S20°E 50.43'
Nail & KC Remon. tag S. side 14" Box Elder	N65°E 129.94'
C/L pavement 1' ± South	
Fence & tree row to North is 5' ± West	



Signed by [Signature]

Date 2/25/99

Surveyor's Michigan License No. 30077