

MAY 22 2000

SECTION

KENT COUNTY REMONUMENTATION

LAND CORNER RECORDATION CERTIFICATE  
Filing Requirement of Act 74, Mich. P.A. 1970

For corners in

KENT COUNTY

(County)

Located In:

Corner Code #

1. Public Land Survey

T      R       
T      R       
T      R       
T      R     

2. Property Controlling  
in Section

S 2 T 10N R 12W Wit. Mon. on

3. Miscellaneous  
Property in Sec.

S      T      R      N-S 1/4 Line

S      T      R      (Tyrone Twp.)

4. Lot No.         , Recorded Plat         

5. Private Claims         

I, Kirk Breitels, in a field survey on Nov. 2, 19 99 do hereby state that under requirements of P.A. 74, Michigan P.A. of 1970, the corner points mentioned in lines 1 and 2 above were in conformance with regulations and rules therefore as required in the current manual of survey instructions of the United States Department of the Interior, Bureau of Land Management or by a decree of a Court of Law and /or that the corner points mentioned in lines 3, 4 and 5 above were in conformance with the rules of the Michigan Board of Land Surveyors or by a Decree of a Court of Law; established, re-established, monumented, recovered, found as expressed below:

NOTE: Not more than 2 corners, all in the same town and range, may be recorded on this certificate.

A. Description of original monument and accessories and/or subsequent restoration:

No Information

B. Description of corner evidence found and/or method applied in restoring or reestablishing corner:

Established location on N-S 1/4 line (E. line of NE 1/4) - at top of West bank of Rogue River.  
Computed C 1/4 corner at Intersection of 1/4 lines falls in Rogue River

1973.98' to N 1/4 corner  
908.11' to C 1/4 corner (computed)

The above location is accepted by me and is generally accepted by professional surveyors as the best available evidence of the position of the Witness Corner.

C. Description of monument for corner and accessories established to perpetuate locating the position of the corner:

Set Kent County Witness Monument as described above

Nail & KC Remon. tag W. side 6" Ash	S00°E 30.73'
Nail & KC Remon. tag SE side Tw. 15"-30" Maple	S55°W 24.19'
Nail & KC Remon. tag N. side Tw. 20" Maple	N80°W 16.56'
Nail & KC Remon. tag SW side 18" Cherry	N30°W 37.39'
C/L E-W gully with small stream is South 60' ±	
West edge of Rogue River is East 12' ±	

REG. OF DEEDS

1999 DEC 15 AM 8:57

STATE OF MICHIGAN  
COUNTY OF KENT  
RECEIVED FOR RECORD

"other"  
corner #3

11612

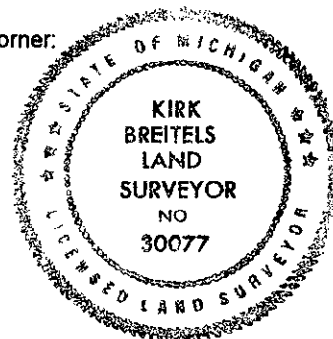
Register of Deeds Stamp & File Number

	A	B	C	D	E	F	G	H	I	J	K	L	M
1													
2	6		5		4		3		2		1		
3													
4	7		8		9		10		11		12		
5													
6	16		17		16		15		14		13		
7													
8	19		20		21		22		23		24		
9													
10	30		29		28		27		26		25		
11													
12	31		32		33		34		35		36		
13													

P.A. 345 1990 KENT COUNTY

PEER APPROVED 12/02/99

CHAIRMAN Harry Huber



Signed by Kirk Breitels

Date 12/6/99

Surveyor's Michigan License No. 30077