

LAND CORNER RECORDATION CERTIFICATE
Filing Requirement of Act 74, Mich. P.A. 1970

For corners in

Keweenaw County	Located in:	Corner Code #
1. Public Land Survey	T56N R30W	M.C. 4 ✓
	T56N R30W	M.C. 5
	T	R
	T	R
2. Property Controlling in Section	S	T
	S	T
3. Miscellaneous Property in Sec.	S	T
	S	T
4. Lot No. , Recorded Plat		
5. Private Claims		

REGISTER'S OFFICE }
 County of Keweenaw } SS
 Received for Record, the 25th
 day of October A.D. 2000
 at 11:00 o'clock A. M., and Recorded
 in Liber 2 of LCR
 on page 3
Marilyn Wingust
 Register of Deeds
 Register of Deeds Stamp & File Number

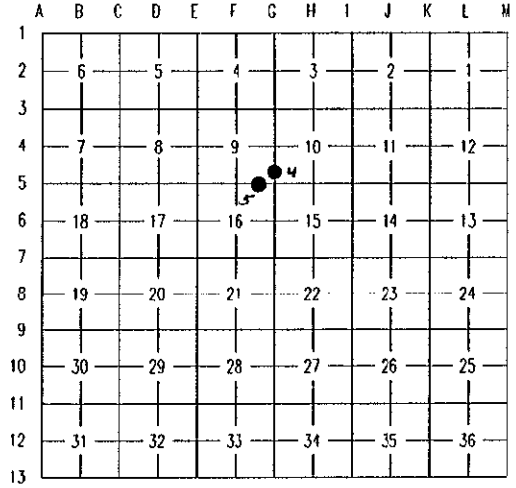
SURVEY & REMONUMENTATION

FEB 07 2001

SECTION

I, Steven C. Hein, in a field survey on May 26, 2000, do hereby state that under requirements of P.A. 74, Michigan P.A. of 1970, the corner points mentioned in lines 1 and 2 above were in conformance with regulations and rules therefore as required in the current manual of survey instructions of the United States Department of the Interior, Bureau of Land Management or by a decree of a Court of Law and /or that the corner points mentioned in lines 3, 4 and 5 above were in conformance with the rules of the Michigan Board of Land Surveyors or by a Decree of a Court of Law; established, re-established, monumented, recovered, found as expressed below:

NOTE: Not more than 2 corners, all in the same town and range, may be recorded on this certificate.



A. Description of original monument and accessories and/or subsequent restoration:

- M.C. 4: Meander Corner between Sections 9 & 10: From original notes: South true line between Sections 9 & 10; 72.82 to Lake Mark Meander Corner on Spruce at high water mark; Spruce 6 N90W 21; do 6 N80E 14. No evidence of original corner or accessories found.
- M.C. 5: Meander Corner between Sections 9 & 16: From original notes: East true line between Sections 9 & 16; 71.71 Set post Meander Corner on margin of Lake at high water mark; Tamarack 8 S60W 17; do 6 N10W 23. No evidence of original corner or accessories.

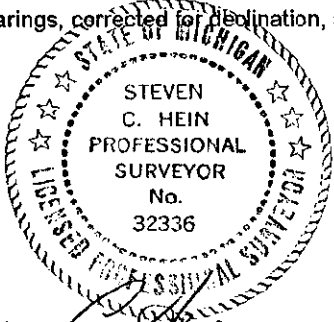
B. Description of corner evidence found and/or method applied in restoring or reestablishing corner:

- M.C. 4: Meander Corner between Sections 9 & 10: No evidence found. Established corner near high water mark on line through the E1/4 Corner Section 9 from the NE. Corner Section 9 (S00°44'27"E).
- M.C. 5: Meander Corner Sections 9 & 16: Found 1/2" capped pin, P.S. 39478 set by R. S. Haataja in his survey dated September 27, 1999. No witnesses found.

C. Description of monument for corner and accessories established to perpetuate locating the position of the corner:

- | | |
|--|---|
| M.C. 4: Meander Corner Sections 9 & 10:
Set 4" Brass Cap stamped for corner on 1" pipe, 75' South to Lake
Witnesses:
14" W. Pine N22°E 36.86'
8" W. Birch S85°E 15.04'
9" W. Birch S30°W 23.10'
6" Spruce N83°W 14.07' | M.C. 5: Meander Corner Sections 9 & 16
Replaced 1/2" capped pin with 4" Brass Cap stamped for corner on 1" pipe, 200' East to Lake
Witnesses:
9" Cedar N22°E 44.19'
1/2" pin N88°23'37"E 64.06'
5/8" pipe N32°W 31.57'
8" R. Maple N17°W 47.45' |
|--|---|

Bearings are compass bearings, corrected for declination, all distances are to a nail and tag in the side of the witness object unless otherwise noted.



Ratified by Peer Group
 In accordance with P.A. 345
 Co. Rep. *[Signature]*
 Date 10/24/00

Signed by *Steven C. Hein*
 Surveyor's Michigan License No. 32336

Date October 21, 2000