

Filing Requirement of Act 74, Mich. P.A. 1970 as Amended

For corners in

Luce

(County)

Located in:

Corner Code #

- | | | | | |
|---------------------------------------|------|-------|-------|---------------|
| 1. Public Land Survey | | T | R | |
| | | T | R | |
| | | T | R | |
| 2. Property Controlling
in Section | S 21 | T 45N | R 11W | 13 |
| | S | T | R | (GCDB 360320) |
| | S | T | R | |
| 3. Miscellaneous
Property in Sec. | S | T | R | |
| | S | T | R | |
| | S | T | R | |
| 4. Lot No. _____, Recorded Plat | | | | |
| 5. Private Claims | | | | |

Register of Deeds Stamp & File Number

[illegible]

I, Stephan J. Szyszkowski, in a field survey on 03/31/14 do hereby state that under requirements of P.A. 74, Michigan P.A. of 1970, the corner points mentioned in lines 1 and 2 above were in conformance with regulations and rules therefore as required in the current manual of survey instructions of the United States Department of the Interior, Bureau of Land Management or by a decree of a Court of Law and /or that the corner points mentioned in lines 3, 4 and 5 above were in conformance with the rules of the Michigan Board of Land Surveyors or by a Decree of a Court of Law; established, re-established, monumented, recovered, found as expressed below:

NOTE: Not more than 2 corners, all in the same town and range, may be recorded on this certificate.

A. Description of original monument and accessories and/or subsequent restoration:

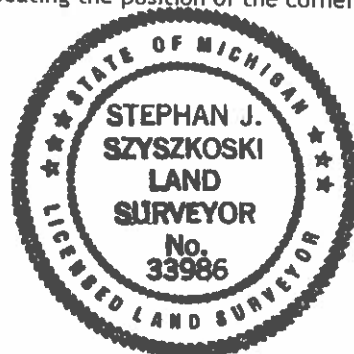
Southeast 1/16 corner Section 21. Not previously monumented.

B. Description of corner evidence found and/or method applied in restoring or reestablishing corner:

Established the position for the corner at the intersection of straight lines connecting opposite 1/16 corners.

C. Description of monument for corner and accessories established to perpetuate locating the position of the corner:

Set 1"IDx36" I.pipe with 2" alum. MDNR cap.
Set measuring nail with MDNR tag in the side of:
6" W.Birch S20°E 7.6' mrkd "SE1/16 BT"
6" W.Birch N48°E 15.1' do
5" W.Birch N32°W 12.8' do
4" W.Birch N68°W 18.2' do
E= 8101580.742 N= 166933.843



Bearings are magnetic. Coordinates are MCS83 in meters (NAD83(2011) Datum).
Coord. Ref.=NGS PID D08495: N= 169938.252 m. E= 8114556.094 m.

Signed by Stephen J. Syzdek
Surveyor's Michigan License No. 33986

Date 04/21/2014

For the Michigan Department of Natural Resources, Forest Resources Division