

CORNER SUMMARY

C-11: NORTHEAST CORNER OF SECTION 31, T3N-R4E, HOWELL TOWNSHIP, LIVINGSTON COUNTY, MICHIGAN.

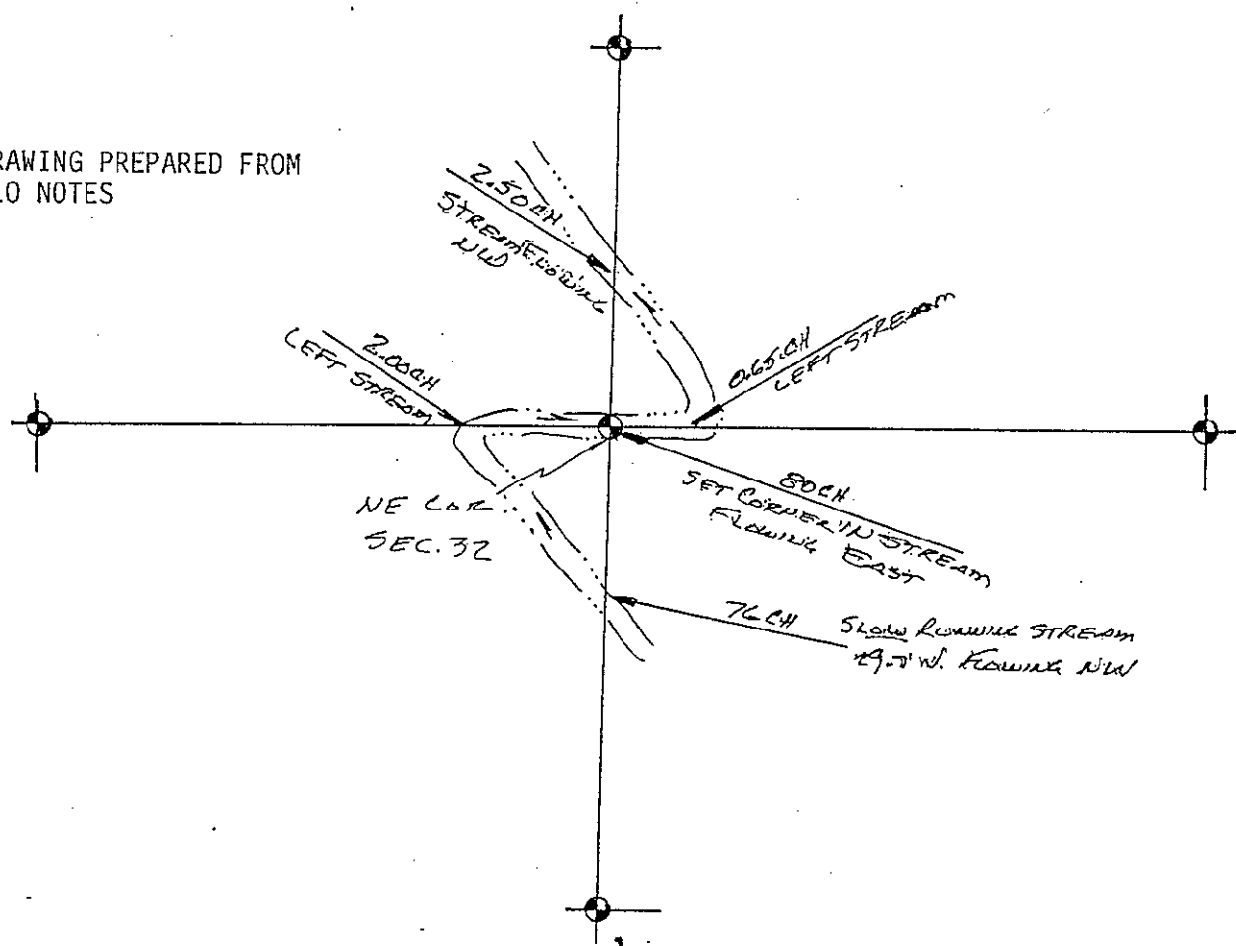
GLO SURVEY DATED APRIL 15, 1825 BY S SIBLEY, DS, AND NONE OF THE GLO WITNESSES REMAIN. GLO NOTES STATED THAT THE CORNER WAS IN A STREAM FLOWING EAST.

M W BULLOCK IN 1869 ALSO STATED THE CORNER WAS IN THE CENTERLINE OF A STREAM AND HE SET A STAKE ON THE NORTH SIDE. WE FOUND THE EXISTING STREAM ABOUT 40 FEET EAST OF A FOUND 2" IRON PIPE AND RUNNING IN A NORTHWESTERLY DIRECTION, SAID PIPE WAS SET BY G STONEROCK IN 1974. APPARENTLY WHEN THE STREAM WAS CLEANED OUT FOR A COUNTY DRAIN IT WAS RELOCATED TO SOME EXTENT (SEE SKETCH OF GLO NOTES). BULLOCK AGAIN WITNESS SAID CORNER IN 1880 AND 1894. NEXT KNOWN ACTIVITY WAS IN 1931 BY C GORDON, BUT HE DID NOT SHOW ANY MEASURES TO THE CORNER, JUST DREW THE CENTERLINE OF THE STREAM THRU THE SECTION CORNER. IN 1962 L MUNSELL SURVEYED ALONG THE NORTH LINE OF SECTIONS 31 AND 32 BUT MADE NO MENTION OF FINDING THE SECTION CORNER. STONEROCK SET THE CORNER IN 1974 AT 1/2 DISTANCE BETWEEN THE NORTH 1/4 OF SECTION 32 AND THE NORTH 1/4 CORNER OF SECTION 31 AND ON AN INTENDED STRAIGHT LINE. SINCE 1974 THE FOLLOWING SURVEYORS HAVE FOUND AND USED THIS SET CORNER: BOSS ENGR., C NEWMAN AND CHMP. THE ONLY WITNESSES THAT REMAIN ARE THOSE OF C NEWMAN IN 1990 AND THEY CHECK. P BENTON HAD A SET OF WITNESSES BUT WERE TO ANOTHER CORNER AND RECORDED WRONG IN HIS NOTES. I MEASURED WEST 2649.91, STONEROCK HAD 2650.15 AND BOSS 2659.87; WE MEASURED EAST 2649.58, NEWMAN HAD 2650.50, CHMP HAD 2650.74, STONEROCK HAD 2650.93 AND BOSS HAD 2640.66 FEET; WE MEASURED SOUTH 2661.51 AND BOSS HAD 2662.34 FEET. FOUND ONE ACT 74 BY STONEROCK AND ONE ACT 132 RECORDED. MADE A WIDE SWEEP OF THE AREA AND DID NOT FIND A SECOND IRON AS BOSS' MEASURES MIGHT HAVE INDICIATED BY THE 10'± DIFFERENCE. CORNER IS IN A MARSH, OPEN IN ALL DIRECTIONS AND SUITABLE FOR GPS IF THE GROUND IS STABLE ENOUGH.

Charles E. Garlock

CHARLES E GARLOCK
PS 14762
HOW95C11

DRAWING PREPARED FROM
GLO NOTES



3N4E C11

LAND CORNER RECORDATION CERTIFICATE
Filing Requirement of Act 74, Mich. P.A. 1970

For corners in

Livingston
(County)

Located In:

Corner Code ##

1. Public Land Survey

T 3N R 4E

C-12

T _____ R _____

T _____ R _____

T _____ R _____

T _____ R _____

2. Property Controlling
in Section

S _____ T _____ R _____

S _____ T _____ R _____

3. Miscellaneous
Property in Sec.

S _____ T _____ R _____

S _____ T _____ R _____

4. Lot No. _____, Recorded Plat _____

5. Private Claims _____

FILED
AUG 22 9 51 AM '95
NANCY HAYLAND
REGISTER OF DEEDS
LIVINGSTON COUNTY, MI
48843

L.S.C.# 425m

Register of Deeds Stamp & File Number

Charles E Garlock in a field survey on June 22, 19 95

Do hereby certify that under requirements of P.A. 74, Michigan P.A. of 1970, the corner points mentioned in lines 1 and 2 above were in conformance with regulations and rules therefore as required in the current manual of survey instructions of the United States Department of the Interior, Bureau of Land Management or by a decree of a Court of Law and/or that the corner points mentioned in lines 3, 4 and 5 above were in conformance with the rules of the Michigan Board of Land Surveyors or by a Decree of a Court of Law; established, re-established, monumented, re-monumented, recovered, found as expressed below:

NOTE: Not more than 4 corners, all in the same town and range, may be recorded on this certificate.

A. Description of original monument and accessories and/or subsequent restoration:

GL0 survey dated: April 15, 1825 by S Sibley, DS

GL0 witnesses: B014-S41W-7 lks

W016-N21½E-47 lks

	A	B	C	D	E	F	G	H	I	J	K	L	M
2	6		5		4		3		2		1		
3													
4	7		8		9		10		11		12		
5													
6	18		17		16		15		14		13		
7													
8	19		20		21		22		23		24		
9													
10	30		29		28		27		26		25		
11													
12	31		32		33		34		35		36		
13													

Additional historical survey data on rear of sheet

B. Description of corner evidence found and/or method applied in restoring or reestablishing corner:

Found 1/2" I. Rod in center of Old post hole rung with stones with fence lines East, West and South

C. Description of monument for corner and accessories established to perpetuate locating the position of the corner:

C-12: E 1/4 cor. Sec. 31 T3N-R4E, Howell Twp. Liv. Co. MI, reset found 1/2" I. Rod with 1 1/4" X 36" I. Pipe with Liv. Co. Remon brass cap on top at +0.5' and Carsonite post next to it.

South-33.89'-sp & tag E/s 7" Oak

S10E-22.00'-sp & tag E/s 12" Maple

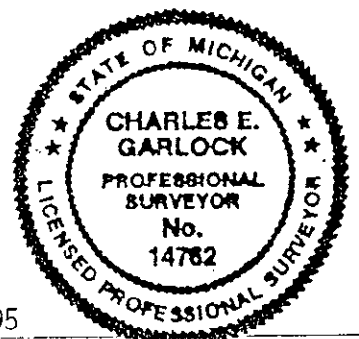
S60E-12.19'-sp & tag N/s 10" Maple

S80E-27.52'-sp & tag N/s 10" Oak

Signed by Charles E Garlock

Date August 15, 1995

Surveyor's Michigan License No. 14762



PA. 345 1990, APPROVED BY LIVINGSTON COUNTY

6/21/95 CO REP JED

FORM APPROVED BY MICHIGAN STATE BOARD OF LAND SURVEYORS, JAN. 28, 1971
REVISED MAY 14, 1975
REVISED JAN. 1983