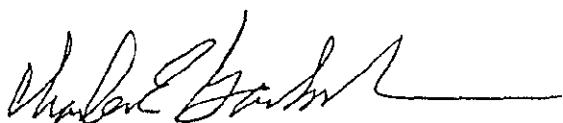


"Be Sure of Your Ground"
CHARLES E. GARLOCK
PROFESSIONAL SURVEYOR
840 EAST DAVIS ROAD
HOWELL, MICHIGAN 48843
OFFICE: (517) 546-3340
FAX: 517 546-2941

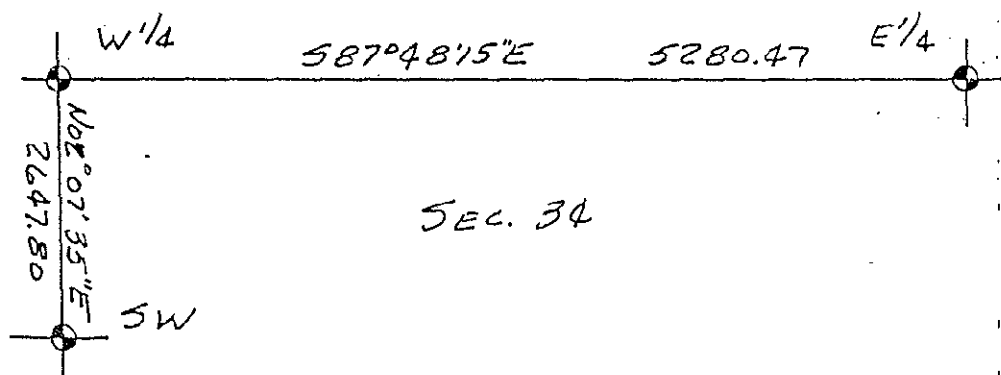
July 26, 1993

G-12: W $\frac{1}{4}$ corner Section 34 Howell Twp. Liv. Co. MI

Prior to 1965, no known surveys or witnesses to this corner except MDOT's tie to existing wood corner post for I-96 survey, which was 356.66 feet South of the South ROW of I-96 as per ROW plans. During a survey in 1965 I set a $\frac{3}{8}$ " iron rod to the occupied corner next to a found wood post, with fence lines running North, East and West. Measured 351.50 feet Northerly to South ROW line of I-96, Boss Engineering measured 351.53 feet to South ROW line in 1972 and recorded an Act 74 as I also did in 1973 using the same witness trees. It appears that through the years since, all known surveyors have used the $\frac{3}{8}$ " iron rod I set in 1965. The corner is located in a heavily wooded area, 360°, with standing water near but not at the corner.



Charles E. Garlock, PS



BK 16804

SUCCESSOR TO:

JUNE 1993

MILES W. BULLOCK, L.S. (1844 TO 1928)

GRANT H. DUNNING, P.E. (1865 TO 1928)

CLAY W. GORDON, RLS (1883 TO 1970)

LYLE W. MUNSELL, RLS (1904 TO 1987)

11-1-93

OCT 25 1993

COMMISSION

LAND CORNER RECORDATION CERTIFICATE
Filing Requirement of Act 74, Mich. P.A. 1970

OCT 12 10 10 AM '93

NANCY HAVILAND
REGISTER OF DEEDS
LIVINGSTON COUNTY, MI
48843

For corners in

Livingston
(County)

Located In:

Corner Code ##

1. Public Land Survey

T 3N R 4E

G-13

T R

T R

T R

2. Property Controlling
in Section

S T R

S T R

3. Miscellaneous
Property in Sec.

S T R

S T R

L.S.C.# 14m

Register of Deeds Stamp & File Number

4. Lot No. , Recorded Plat

5. Private Claims

	A	B	C	D	E	F	G	H	I	J	K	L	M
2	6		5		4		3		2		1		
3													
4	7		8		9		10		11		12		
5													
6	18		17		16		15		14		13		
7													
8	19		20		21		22		23		24		
9													
10	30		29		28		27		26		25		
11													
12	31		32		33		34		35		36		
13													

I, Charles E Garlock in a field survey on October 8, 19 93,
do hereby certify that under requirements of P.A. 74, Michigan P.A. of 1970, the corner points mentioned
in lines 1 and 2 above were in conformance with regulations and rules therefore as required in the
current manual of survey instructions of the United States Department of the Interior, Bureau of Land
Management or by a decree of a Court of Law and/or that the corner points mentioned in lines 3, 4 and 5
above were in conformance with the rules of the Michigan Board of Land Surveyors or by a Decree of a
Court of Law; established, re-established, monumented, re-monumented, recovered, found as
expressed below:

NOTE: Not more than 4 corners, all in the same town and range, may be recorded
on this certificate.

A. Description of original monument and accessories and/or subsequent restoration:

GLO notes dated: April 15, 1825

GLO witnesses: WO 20-N40E-29 lks

WO 8-N57W-68 lks

Additional historical data on back

B. Description of corner evidence found and/or method applied in restoring or reestablishing corner:

Found 1/2" I. Rod 2.5' South of existing centerline of Mason Rd.

C. Description of monument for corner and accessories established to perpetuate locating the position of the corner:

Set 1 1/4" X 36" breakaway I. Pipe in Mon. Box with brass cap.

South-45.94'-face of 4" steel post

S15E-48.80'-face 5" I beam

S45E-60.02'-sp N/s 16" Apple

S55W-43.64'-sp N/s 7" Spruce

North-2.5'-centerline Mason Rd.

Approved by Livingston County Monumentation Peer Group August 18, 1993

Signed by [Signature] Date October 9, 1993

Surveyor's Michigan License No. 14762

10/26/93