

"Be Sure of Your Ground"

CHARLES E. GARLOCK

PROFESSIONAL SURVEYOR

840 EAST DAVIS ROAD

HOWELL, MICHIGAN 48843

OFFICE: (517) 546-3340

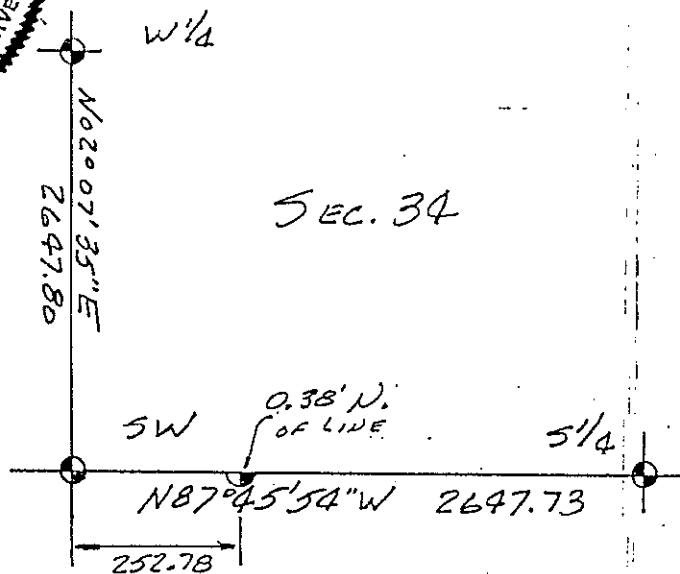
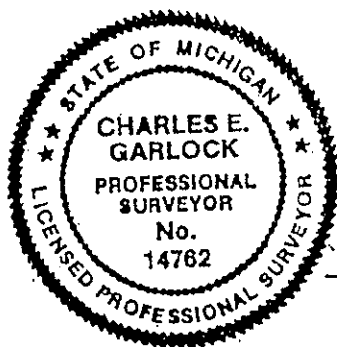
FAX: 517 546-2941

July 26, 1993

G-13: SW corner Section 34 Howell Twp. Liv. Co. MI

M.W. Bullock had first witnessed this point in 1894 to an 8" White Oak, N28°W-34.98', which was not found. In 1973 Boss Engineering set a PK for this corner at a split of the distance between SW corner Section 33 and SE corner Section 34, Howell Township (5295.54 feet each direction), and on the center-line of Mason Rd. David Finney used this point in a 1978 survey. Later in 1990 Boss Engineering replaced the PK with a 1/2" iron rod and cap, which Desine Engineering used later in the year, as I did in 1992 for a Section 33 survey. Act 74's were filed by Boss Engineering in 1974 and 1991. The iron is located in an asphalt road surface with trees lining the road East and West on both sides.

Charles E. Garlock, PS



BK16804

SUCCESSOR TO:

JUNE 1993

MILES W. BULLOCK, L.S. (1844 TO 1926)

GRANT H. DUNNING, P.E. (1865 TO 1928)

CLAY W. GORDON, RLS (1883 TO 1970)

LYLE W. MUNSELL, RLS (1904 TO 1987)