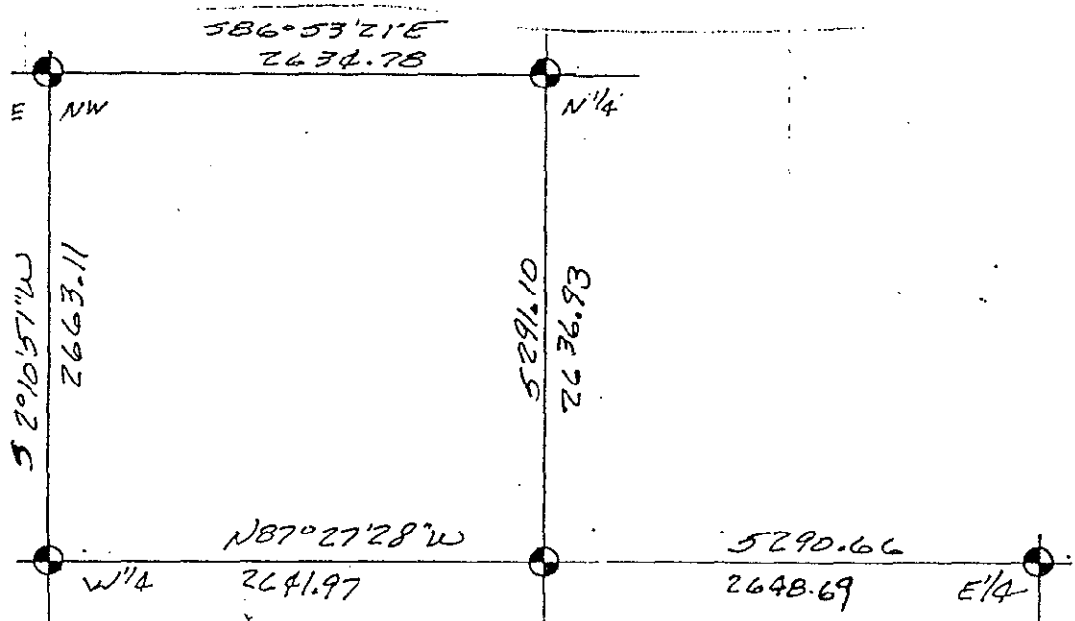
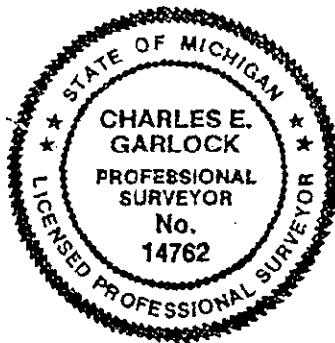


15 March 1962

GLO SURVEY IS DATED APRIL 15, 1825 BY S SIBLEY AND NONE OF THE GLO WITNESSES REMAIN TODAY.

Charles E. Gault



3N-4E

K-11

4

SURVEY & REMONUMENTATION

OCT 25 1993

COMMISSION

LAND CORNER RECORDATION CERTIFICATE  
Filing Requirement of Act 74, Mich. P.A. 1970

For corners in

Livingston  
(County)

Located In:

Corner Code ##

1. Public Land Survey

T 3N R 4E

K-12

2. Property Controlling  
in Section

S T R

3. Miscellaneous  
Property in Sec.

S T R

4. Lot No. , Recorded Plat

5. Private Claims

FILED  
AUG 26 9 12 AM '93  
NANCY HAVILAND  
REGISTER OF DEEDS  
LIVINGSTON COUNTY, MI  
48843

5m

L.S.C. #

Register of Deeds Stamp & File Number

|    | A  | B | C  | D | E  | F | G  | H | I  | J | K  | L | M |
|----|----|---|----|---|----|---|----|---|----|---|----|---|---|
| 2  | 6  |   | 5  |   | 4  |   | 3  |   | 2  |   | 1  |   |   |
| 3  |    |   |    |   |    |   |    |   |    |   |    |   |   |
| 4  | 7  |   | 8  |   | 9  |   | 10 |   | 11 |   | 12 |   |   |
| 5  |    |   |    |   |    |   |    |   |    |   |    |   |   |
| 6  | 18 |   | 17 |   | 16 |   | 15 |   | 14 |   | 13 |   |   |
| 7  |    |   |    |   |    |   |    |   |    |   |    |   |   |
| 8  | 19 |   | 20 |   | 21 |   | 22 |   | 23 |   | 24 |   |   |
| 9  |    |   |    |   |    |   |    |   |    |   |    |   |   |
| 10 | 30 |   | 29 |   | 28 |   | 27 |   | 26 |   | 25 |   |   |
| 11 |    |   |    |   |    |   |    |   |    |   |    |   |   |
| 12 | 31 |   | 32 |   | 33 |   | 34 |   | 35 |   | 36 |   |   |
| 13 |    |   |    |   |    |   |    |   |    |   |    |   |   |

I, Charles E Garlock, in a field survey on August 25, 19 93, do hereby certify that under requirements of P.A. 74, Michigan P.A. of 1970, the corner points mentioned in lines 1 and 2 above were in conformance with regulations and rules therefore as required in the current manual of survey instructions of the United States Department of the Interior, Bureau of Land Management or by a decree of a Court of Law and/or that the corner points mentioned in lines 3, 4 and 5 above were in conformance with the rules of the Michigan Board of Land Surveyors or by a Decree of a Court of Law; established, re-established, monumented, re-monumented, recovered, found as expressed below:

NOTE: Not more than 4 corners, all in the same town and range, may be recorded on this certificate.

A. Description of original monument and accessories and/or subsequent restoration:

GLO notes: Elm 9-S25E-101ks

WO 11-N24 1/2 W-41 lks

Additional historical data on back of sheet

GLO notes April 15, 1825

B. Description of corner evidence found and/or method applied in restoring or reestablishing corner:

Found 1" I. Pipe in Monument Box

Description of monument for corner and accessories established to perpetuate locating the position of the corner:  
Set brass cap on top of existing 1" I. Pipe marked Liv. Co. Mon. Cor.

S45E-67.07'-NW corner of Brick House

S45W-72.63'-NE cor. House #401 (main structure)

N45W-70.63'-SE cor. house #420 Fdn.

N15E-48.19'-ctr. 8" Mulberry

on centerline of Sibley St E & W

West-4.65'-centerline of Gregory St to South

N45W-8.20'-ctr. Manhole cover

N20E-10.50'-ctr. Manhole cover

APPROVED by Livingston County Monumentation Peer Group, August 18, 1993

igned by Charles E Garlock Date August 25, 1993

urveyor's Michigan License No. 14762

10/26/93