

SURVEY & REMONUMENTATION

APR 28 1995

C152258

LAND CORNER RECORDATION CERTIFICATE
Filing Requirement of Act 74, Mich. P.A. 1970

94 DEC 14 AM 10:54

COMMISSION

MACOMB COUNTY, MI
DEEDS
REC'D

LIBER 6527 PAGE 835

Register of Deeds Stamp & File Number

or corners in
MACOMB
(County)
Located In: Sterling Township Corner Code #
Public Land Survey T 2N R 12E H-7
Property Controlling S T R
in Section S T R
Miscellaneous S T R
Property in Sec. S T R

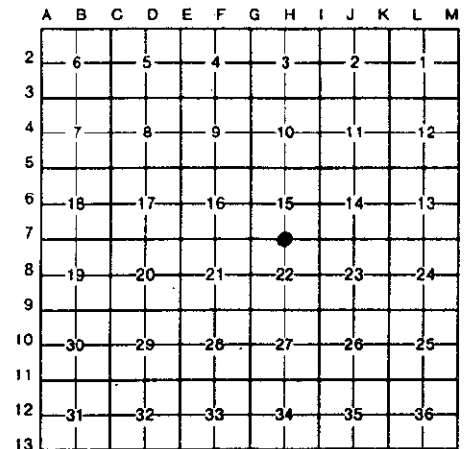
Lot No. Recorded Plat
Private Claims

Randy Kolehouse in a field survey on June 30, 1994
I hereby certify that under requirements of P.A. 74, Michigan P.A. of 1970, the corner points mentioned in lines 1 and 2 above were in conformance with regulations and rules therefore as required in the current manual of survey instructions of the United States Department of the Interior, Bureau of Land Management or by a decree of a Court of Law and/or that the corner points mentioned in lines 3, 4 and 5 above were in conformance with the rules of the Michigan Board of Land Surveyors or by a Decree of a Court of Law; established, re-established, monumented, re-monumented, recovered, found as expressed below:

NOTE: Not more than 4 corners, all in the same town and range, may be recorded on this certificate.

Description of original monument and accessories and/or subsequent restoration:

H-7	1817	G.L.O.	Notes	Wampler	NA	Post
	NA	MCRC.	File #84	NA	NA	Iron
	1978	L.C.R.C.	L. 2936 P. 220	Hooth	#7966	3/4" Pipe in Mon. Box



Description of corner evidence found and/or method applied in restoring or reestablishing corner:

I-7 Found 3/4" iron in monument box in center line of 17 Mile Road.

L.C.R.C. L. 2936 P. 220 #735
Center Line 20" Maple S 45° E 73.4'
Center Line 20" Maple S 30° W 54.5'
NE Cor. Hse. 10990 S 95.07'

Measure W. 2587.7 to G-7 (G.L.O. 2609.64)
Measure E 2650.87 to I-7 (G.L.O. 2609.64)

ACCEPTED BY THE MACOMB COUNTY SURVEY PEER GROUP AS THE OFFICIAL CORNER UNDER MICHIGAN PUBLIC ACT 345 OF 1990 AT A MEETING HELD ON 9-30-94
WILLIAM E. SODERBERG, P.S., CHAIRMAN

Description of monument for corner and accessories established to perpetuate locating the position of the corner:

I-7 I replaced the 3/4" Iron with a 3/4" x 24" Iron Rod w/2" diameter aluminum cap stamped "Macomb County Monument MI Act 345 #25854" in an existing Monument Box.

PK & MDSH Tag W-Face Lt. Pole N 10° E 42.21'
PK & Tag SW Face Lt. Pole S 52° E 53.49'
NE Cor. Hse. 10990 S 2° W 95.95.07'
PK S Face Lt. Pole N 66° W 117.47'

The selected location is accepted by me and is generally accepted by professional surveyors as the best available evidence of the position of the original corner.

igned by Randy J. Kolehouse Date 10/14/94
Surveyor's Michigan License No. 25854

