

# LAND CORNER RECORDATION CERTIFICATE

Filing Requirement of Act 74, Mich. PA 1970

For Corners In:

Midland  
(County)

Located In

Corner Code #

1. Public Land Survey	T	13N	R	2W	L10
	T		R		
2. Property Controlling in Section	S	25	T	13N	R 2W 9
	S		T		
3. Miscellaneous Property in Section	S		T		R
	S		T		R

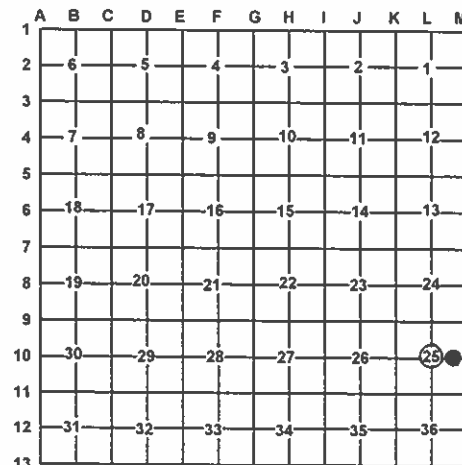
4. Lot No: Recorded Plat:

5. Private Claims:

I, Craig W. McVean, in a field survey on July 13, 2010 do hereby state that under requirements of PA 74, Michigan PA of 1970, the corner points mentioned in lines 1 and 2 above were in conformance with regulations and rules therefore as required in the current manual of survey instructions of the United States Department of the Interior, Bureau of Land Management or by a decree of a Court of Law and/or that the corner points mentioned in lines 3, 4 and 5 above were in conformance with the rules of the Michigan Board of Land Surveyors or by a Decree of a Court of Law; established, re-established, monumented, recovered, found as expressed below:

**NOTE: Not more than 2 corners, all in the same town and range, may be recorded on this certificate.**

Register of Deeds Stamp & File Number



A. Description of original monument and accessories and/or subsequent restoration:

L10 - 1903 - CSR - Large Liber, p. 35 - F. J. Gibbs

Set Post

1) Pine Stp. S10°E 50

2) Pine Stp. N44°E 29

- 1972 - Rec. Survey - L. 1, p. 246 & Field notes

D. B. Whittier - Fd. Wood Stake - Set ¾" pipe (Notes say - "Fd. 4" Oak post" and shows fences N, S & E.)

9 - 1904 - CSR - P. 35 - F. J. Gibbs

Set post for corner.



B. Description of corner evidence found and/or method applied in restoring or re-establishing corner:

L10 - C ¼ Corner Sec. 25 - Fd. ¾" x 18" iron pipe with cap #10070 (DBW) - buried 6"± - on S. side Old RR Tie post. Also a bent up steel fence post was alongside that we removed to find pipe. No evidence of Gibb's BT's. Down fence remains E & W from pipe. Down N-S Fence remains are 1' to 4'± to the West. This ¾" pipe appears to be a perpetuation of Gibb's corner. The calculated intersection of ¼ lines is S30°35'E 1.84'. Also found ½" capped iron #17741 & 52469 is S35°47'E 2.11' from the capped ¾" pipe. This ½" CIR has recently been set without regard to the historical Gibbs-Whittier position and is thus ejected. ¾" iron pipe with cap #10070 accepted as the best available evidence of the position of the corner.

9 - CE 1/16 Corner Sec. 25 -  
No evidence of Gibbs Post.  
Set 2" Alum. Cap on 5/8" x 34" long  
iron rebar per standard BLM procedure.  
Railroad Tie fence corner E, W, & S is S2°W 12.5'±.

C. Description of monument for corner and accessories established to perpetuate locating the position of the corner:

L10 - ¾" I.D. iron pipe with plastic cap #10070.

Add Orange Carsonite Post 1' West.

West 10.95' to set N & T in S. side 4" W. Oak

N23°E 13.39' to set N & T at fd. N & T #52469 in side of 11" Oak

N60°E 31.73' to set N & T in N. side 5" Oak

S62°E 1.14' to chiseled 'X' in face 4" steel pipe in concrete

S35°47'E 2.11' to fd. ½" CIR #17741 & 52469

9 - Stamped 2" Alum. Cap on 5/8" x 34" iron rebar  
Set Blue Carsonite Post with Loc. Tag 1' SW  
N47°E 18.52' to set N & T in NW side 5" R. Maple  
S39°E 17.96' to set N & T in N. side 8" Tw. Oak  
S49°W 3.96' to set N & T in N. side 7" Tw. R. Maple  
N83°W 35.52' to set N & T in N. side 15" R. Maple

Signed by:

Craig W. McVean

Date:

11/18/2010

Surveyor's Michigan License No.:

39088