

# LAND CORNER RECORDATION CERTIFICATE

Filing Requirement of Act 74, Mich. PA 1970

For Corners In:				
Midland		Located In		Corner Code #
(County)				
1. Public Land Survey		T 15N R 1W		F12
		T	R	
2. Property Controlling in Section	S 33	T 15N R 1W		9
	S	T	R	
3. Miscellaneous Property in Section	S	T	R	
	S	T	R	

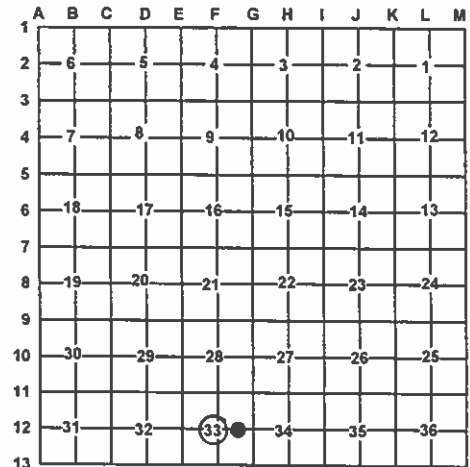
4. Lot No: Recorded Plat:

5. Private Claims:

I, Craig W. McVean, in a field survey on Sept. 20, 2011 do hereby state that under requirements of PA 74, Michigan PA of 1970, the corner points mentioned in lines 1 and 2 above were in conformance with regulations and rules therefore as required in the current manual of survey instructions of the United States Department of the Interior, Bureau of Land Management or by a decree of a Court of Law and/or that the corner points mentioned in lines 3, 4 and 5 above were in conformance with the rules of the Michigan Board of Land Surveyors or by a Decree of a Court of Law; established, re-established, monumented, recovered, found as expressed below:

**NOTE: Not more than 2 corners, all in the same town and range, may be recorded on this certificate.**

Register of Deeds Stamp & File Number



A. Description of original monument and accessories and/or subsequent restoration:

F12 – 1914 – CSR – FB. T15N, R1W – F. J. Gibbs – Set piece of cast iron grate at intersection of two right lines connecting opposite ¼ corners.  
1) Norway 7 NE'ly 16; Spruce 2) Pine Stp. 10 SE'ly 48

9 – 1914 – CSR – FB. T15N, R1W – F. J. Gibbs – Set post. Iron promised.  
– 1983 – Rec. Survey – L. 3, p. 420 – J. H. Gilbert – Survey shows – Set ½" steel rod w/ cap – N89°47'46"W 1328.14' from 'G12'.

B. Description of corner evidence found and/or method applied in restoring or re-establishing corner:

F12 – C ¼ Corner Sec. 33 – Fd. cast iron grate with trapezoidal top – 0.16' x 0.22' x 0.18' x 0.22'. Fd. 3 stones around. No evidence of Gibb's BT's. No occupation in area. Fits ¼ line intersection and Gibb's dimensions closely. Cast iron grate accepted as the best available evidence of the position of the corner.

9 – CE 1/16 corner Sec. 33 – Fd. 1.55' long cast iron grate with 0.2' x 0.3' x 0.25' x 0.3' Trapezoidal head at surface of ORV trail. Tried to drive down but grate broke so replaced with 2" Alum. Cap on 5/8" x 34" rebar. Measured grid bearing and distance as follows, from Cor. '9'; N89°38'36" W 1327.6' – (1328.58' – FJG) to 'F12' and S89°43'20"E 1324.92' (1328.58' – FJG) to 'G12' as monumented. This 'G12' position appears to be some kind of reestablishment not a recovery of Gibb's position at 'G12'. Searched for Gilbert's iron 3.2' Westeryly but didn't find. Thus 2" Alum. Cap accepted as the best available evidence of the position of the corner.

C. Description of monument for corner and accessories established to perpetuate locating the position of the corner:

F12 – Cast iron grate  
Set Blue Carsonite Post with loc. tag 1' NE  
S27°W 26.80' to set N & T in E. side 28" W. Pine  
N55°W 67.38' to set N & T in NE side 6" W. Pine  
N30°E 40.74' to set N & T in NW side 16" W. Pine  
S69°E 66.58' to set N & T in N. side 18" R. Pine

9 – Stamped 2" Alum. Cap on 5/8" x 34" long iron rebar - below grade of ORV Trail. Placed the 2 pieces of the iron grate alongside as a memorial.  
Set Blue Carsonite Post with loc. tag 5' West  
N14°E 52.56' to set N & T in W. side 19" W. Pine  
N81°W 25.71' to set N & T in N. side 10" Oak  
S61°W 12.10' to set N & T in NW side 10" Oak  
S10°W 18.96' to set N & T in E. side 4" W. Pine

Signed by:

Craig W. McVean

Date:

12/10/2012

Surveyor's Michigan License No.:

39088

