

SURVEY &  
REMONUMENTATION MONTCALM COUNTY REMONUMENTATION PROGRAM  
LAND CORNER RECORDATION CERTIFICATE

JAN 17 1996

Filing Requirement of Act 74, Mich. P.A. 1970

For corners in  
Montcalm  
(County)

COMMISSION

Located In:

Corner Code #

Bloomer Township

STATE OF MICHIGAN  
MONTCALM COUNTY  
RECORDED

20 DEC 95 11:35 A.M.

VIRGINIA L. KNEPPER  
REGISTER OF DEEDS

Register of Deeds Stamp & File Number

1. Public Land Survey Sec 24 T 9 N R 5 W K-7, NW Corner  
T      R       
T      R       
T      R       
2. Property Controlling S      T      R       
in Section S      T      R       
3. Miscellaneous S      T      R       
Property in Sec. S      T      R       
4. Lot No.           , Recorded Plat             
5. Private Claims

I, William Tingley a field survey on June 16, 1995,  
do hereby certify that under requirements of P.A. 74, Michigan P.A. of 1970, the corner points mentioned  
in lines 1 and 2 above were in conformance with regulations and rules therefore as required in the  
current manual of survey instructions of the United States Department of the Interior, Bureau of Land  
Management or by a decree of a Court of Law and/or that the corner points mentioned in lines 3, 4 and 5  
above were in conformance with the rules of the Michigan Board of Land Surveyors or by a Decree of a  
Court of Law; established, re-established, monumented, re-monumented, recovered, found as  
expressed below:

NOTE: Not more than 4 corners, all in the same town and range, may be recorded  
on this certificate.

A. Description of original monument and accessories and/or subsequent restoration:

1831, Orange Ridson, Deputy Surveyor, GLO Notes

Set Post corner to Sections 13, 14, 23, and 24

Sugar tree 10" S35°E 30 links  
Lynn 12" N50°W 34 links

1877, F.A. Palmer, County Surveyor

At Northwest corner of Section 24, put in pieces of plow point with stake

R.D. McNutt, County Surveyor, record cards

Same data as 1831 and 1877

1980, Richard Crater #16924, Liber 1, page 501, LCRC

Found plowpoint at Boyer and Herrick roads on fence line North

Set railroad spike over plow point

Elm 14" S45°E 47.30 feet  
Pine 2" N20°W 40.90 feet  
Maple 2" N40°W 39.30 feet  
Street Sign Post S45°W 35.40 feet

1986, Peter Beaver #20828, LCRC, Liber 2, page 112

Found railroad spike as noted in Liber 1, Page 501 and set a 3/4" pipe set over railroad spike

P.K. Nail and Brass Tag Southwest side 20" Elm S45°E 47.40 feet  
P.K. Nail and Brass Tag Northwest side 6" Elm N15°E 37.95 feet  
P.K. Nail and Brass Tag Southside Power Pole S75°W 117.93 feet  
Centerline 2" diameter Steel Street Sign S45°W 35.40 feet

B. Description of corner evidence found and/or method applied in restoring or reestablishing corner:

Found 3/4" Iron pipe (bent at top) 0.3 feet deep

Found plow point, point down 1 foot below surface, found small piece of plow point 2.5 feet deep (railroad spike gone).

All 4 feet North of centerline of Boyer Road and 8 feet West of centerline Herrick Road. Fence North is 5 feet +/- East.

C. Description of monument for corner and accessories established to perpetuate locating the position of the corner:

Set Remonumentation Corner over pipe and plow point.

Set nail and tag in 10" Elm N15°E 37.56 feet  
Set nail and tag in 8" Pine N10°W 40.77 feet  
Set nail and tag in 8" Maple N40°W 39.20 feet  
Set nail and tag in Stump S35°E 46.87 feet  
The above trees are apparently old bearing trees but found no nails.  
Set nail and tag in Power Pole S45°W 46.78 feet

This corner is accepted as a careful and faithful perpetuation of the position of the original corner.

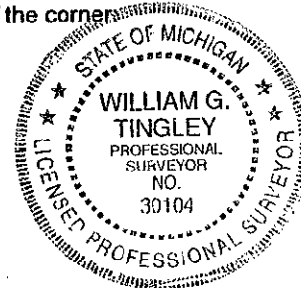
Signed by William G. Tingley Date 12-12-1995

Surveyor's Michigan License No. 30104

ACCEPTED BY THE MONTCALM COUNTY SURVEY PEER  
GROUP AS THE OFFICIAL CORNER UNDER MICHIGAN  
PUBLIC ACT 345 OF 1990 AT A MEETING HELD 12.12.95

WGT  
William Tingley, PS, Chairman

Continued on back .....



FORM APPROVED BY MICHIGAN STATE BOARD OF LAND SURVEYORS, JAN. 28, 1971  
REVISED MAY 14, 1975  
REVISED JAN., 1983  
ADAPTED FOR WORD PROCESSING MARCH, 1993

Continued from front (K-7, 9-5)

1987, William Ruddell #14769, LCRC, Liber 2, Page 155

Found capped iron

Nail and Flag 6" Elm N15°E 37.95 feet

P.K. Nail and Disc 24" Elm Southeast 47.40 feet

Centerline Road Sign Post Southwest 35.40 feet

Also survey Liber 602, Page 949

1987, W.G. Tingley #30104 in survey does not describe corner.

1989, W.G. Tingley, #30104 in survey

Found 1" iron as recorded