

LAND CORNER RECORDATION CERTIFICATE
Filing Requirement of Act 74, Mich. P.A. 1970

A1703

For corners in
Muskegon County

Located in:

Corner Code #

1. Public Land Survey

T 11N R 17W

D-6

2. Property Controlling
in Section

S

T

3. Miscellaneous
Property in Sec.

S

T

S

T

S

T

4. Lot No. _____, Recorded Plat _____

5. Private Claims _____

SURVEY &
REMONUMENTATION

Register of Deeds Stamp & File Number

APR 04 1996

COMMISSION

	B	C	D	E	F	G	H	I	J	K	L	M
2	6	5	4	3	2	1						
3												
4	7	8	9	10	11	12						
5												
6	18	17	16	15	14	13						
7												
8	19	20	21	22	23	24						
9												
10	30	29	28	27	26	25						
11												
12	31	32	33	34	35	36						
13												

I, Donald G. Sandel, in a field survey on Nov. 29, 1995 hereby certify that under requirements of P.A. 74, Michigan P.A. of 1970, the corner points mentioned in lines 1 and 2 above were in conformance with regulations and rules therefore as required in the current manual of survey instructions of the United States Department of the Interior, Bureau of Land Management or by a decree of a Court of Law and/or that the corner points mentioned in lines 3, 4 and 5 above were in conformance with the rules of the Michigan Board of Land Surveyors or by a Decree of a Court of Law; established, re-established, monumented, re-monumented, recovered, found as expressed below:

NOTE: Not more than 4 corners, all in the same town and range, may be recorded on this certificate.

A. Description of original monument and accessories and/or subsequent restoration:

(1) GLO: Corner not set by GLO Survey.

(2) MCRC (1950's) witnesses: SW 71.5' Power Pole, SE 38.0' 30" Twin Oak, NE 37.5' 12" Red Oak.

(3) Muskegon County Witness Book Witnesses: NW 43.85' 6" Pine, TW 20" Oak 44.45', 18" Oak 53.12', 20" Oak 44.05'.

(4) Found 3/8" rebar in monument box; as per August 31, 1995 Donald G. Sandel Survey. NE 28" Oak 44.44', ESE 30" Twin Oak 44.39', SE 22" Oak 53.09', NW 6" Pine 43.85'.

B. Description of corner evidence found and/or method applied in restoring or reestablishing corner:

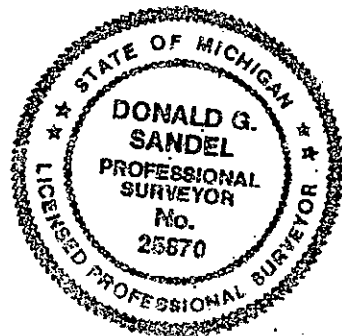
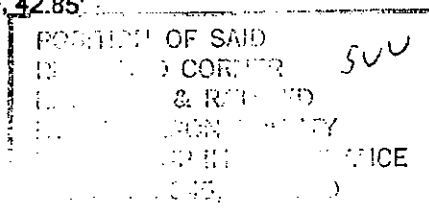
(1) Found rebar in monument box at approximate center line of Jay Road. Verified corner location with existing witnesses.

(2) Historical usage, documentation, and evidence of corner location reviewed and ratified by the Muskegon County Peer Group, December 4, 1995.

C. Description of monument for corner and accessories established to perpetuate locating the position of the corner:

Set 2 3/4" D Cast Iron "County Survey" monument in place of found rebar; witnessed as follows:

N61°E, set nail NW side, 28" Oak, 44.26'
S70°E, set nail over old found nail SW side, 38" Twin Oak, 44.41'
S30°E, set nail over old found nail SW side, 28" Oak, 53.01'
S21°E, found nail NE side, Utility Pole, 65.66'
N88°W, set nail N side, 9" Red Pine, 31.40'
N41°W, set nail NE side, 6" Red Pine, 42.85'



Signed by Donald G. Sandel
Surveyor's Michigan License No. 25870

Date 5 December 1995