

MICHIGAN
DEPARTMENT OF CONSERVATION
FORESTRY DIVISION

LAND CORNER RECORD

T. 44 N.R. 23 W

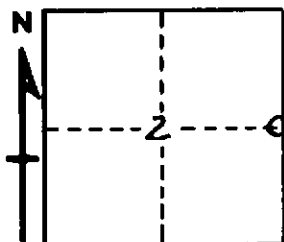
Marquette COUNTY

DESCRIPTION OF CORNER 1/4 Corner between Section 1 and 2

CORNER MONUMENT One-inch galvanized pipe with 4-inch aluminum cap.

DATE MONUMENT PLACED AND WITNESSED April 13, 1962 by A. Metsa and W. Oliver

WITNESSES TO CORNER..... Soft Maple 12 N 6 E 32.5 links



CIRCLE CORNER REGISTERED

Y. Birch 11 N 53 W 47.0 links

Y. Birch 12 S 28 W 21.0 links

AND

DESCRIPTION IN DETAIL AS TO HOW CORNER WAS LOCATED AND IDENTIFIED OR RESTORED.

This corner was set from the original yellow birch bearing tree. It was a dead stub 14 feet high, 24 inches in diameter with some scribe marks distinct on the upper face. The roots and a part of the stump of the hemlock B.T. remained, but the face and scribe marks had rotted away.

SURVEYOR'S SEAL

SIGNED

Aune G. Metsa
REGISTERED LAND SURVEYOR

DATE

4/16/62