

MICHIGAN
DEPARTMENT OF CONSERVATION
FORESTRY DIVISION

LAND CORNER RECORD

T. 45N N.R. 27W

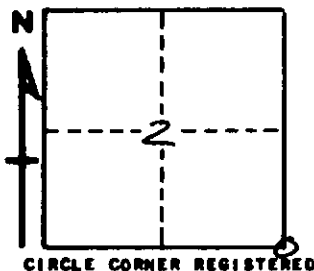
Marquette COUNTY

DESCRIPTION OF CORNER Sec. Cor. common to Secs. 1-2-11-12

CORNER MONUMENT 1" pipe with 4" aluminum cap.

DATE MONUMENT PLACED AND WITNESSED 9/12/66

WITNESSES TO CORNER..... 9" Red Oak (S11 NBT) South 3.9'



9" Red Oak (S1 NBT) N40°E 8.2'

AND

DESCRIPTION IN DETAIL AS TO HOW CORNER WAS LOCATED AND IDENTIFIED OR RESTORED.

This corner replaced from two probable B.T.s.

Y.pine stub bearing N71°W 29 lks and Y. pine (down) bearing S71°E
50 links.

Both badly burned with no positive identifying marks.

SURVEYOR'S SEAL

SIGNED Billy D. Buckler DATE 1/11/67
REGISTERED LAND SURVEYOR