

MICHIGAN
DEPARTMENT OF CONSERVATION
FORESTRY DIVISION

LAND CORNER RECORD

T. 45N N.R. 27W

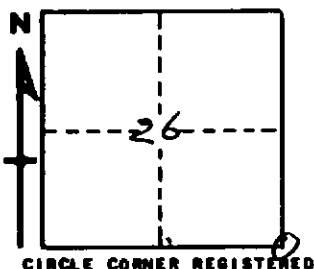
Marquette COUNTY

DESCRIPTION OF CORNER Sec. Cor. common to Secs. 25-26-35-36

CORNER MONUMENT 8' steel fence post

DATE MONUMENT PLACED AND WITNESSED 9/14/66

WITNESSES TO CORNER..... 9" W. Pine (NBT) N68°W 49.7'



SW Cor. sauna bldg. N13°E 87.8'

AND

DESCRIPTION IN DETAIL AS TO HOW CORNER WAS LOCATED AND IDENTIFIED OR RESTORED.

This corner re-witnessed as set by unknown surveyor and used by local owners. Position checks well with corners, 1 mile west; 1 mile north and $\frac{1}{2}$ mile south.

Cor. lies on west bank of Charley Lakes.

SURVEYOR'S SEAL

SIGNED Billy D. Buckler DATE 1/11/67
REGISTERED LAND SURVEYOR