

MICHIGAN
DEPARTMENT OF CONSERVATION
FORESTRY DIVISION

LAND CORNER RECORD

T. 45N N.R. 27W

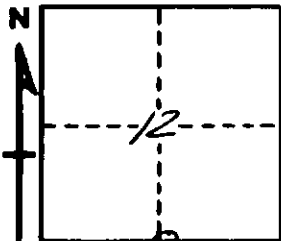
Marquette COUNTY

DESCRIPTION OF CORNER 1/4 corner bet. Secs. 12-13

CORNER MONUMENT 1" pipe with 4" aluminum cap.

DATE MONUMENT PLACED AND WITNESSED 10/12/66

WITNESSES TO CORNER..... 8" Hard Maple (1/4 S NBT) N65°W 38.3'



8" B. Spruce (1/4 S NBT) N40°E 6.3'

AND

DESCRIPTION IN DETAIL AS TO HOW CORNER WAS LOCATED AND IDENTIFIED OR RESTORED.

This corner re-established on line with sec. corners and record distance east of swamp edge.

No evidence of original corner.

Corner lies 3.00 chs. north of Hay Lake.

SURVEYOR'S SEAL

SIGNED Billy D. Buckler DATE 1/11/67
REGISTERED LAND SURVEYOR