

MICHIGAN  
DEPARTMENT OF CONSERVATION  
FORESTRY DIVISION

# LAND CORNER RECORD

T. 46-45 N.R. 30 W

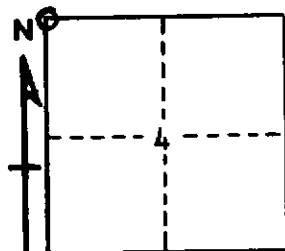
Marquette-Dickinson COUNTY

DESCRIPTION OF CORNER Sec. Cor. 4, 5, 32, & 33

CORNER MONUMENT 1" I. D. by 36" iron pipe with 4" aluminum cap

DATE MONUMENT PLACED AND WITNESSED July 26, 1968

WITNESSES TO CORNER..... Sugar Maple 5 N42½E 31½ lks. "S33 MBT"



Sugar Maple 6 S28½E 56 lks. "S5 MBT"

Sugar Maple 5 S36½W 29 lks. "S4 MBT"

AND

CIRCLE CORNER REGISTERED

DESCRIPTION IN DETAIL AS TO HOW CORNER WAS LOCATED AND IDENTIFIED OR RESTORED.

No positive original evidence of this corner was found, although a previous surveyor several years ago had set a wood post, evidently at the site of an old squared up cedar tree which apparently was lying on the ground then and still is as of this date. This post bears N74°17'W 24.7 links from the corner set by the undersigned and was witnessed as follows:

Red Maple 6 (now 10) S20E 19 lks.

Sugar Maple 5 (now 7) N33W 27 lks.

The original meander corners on the North & South sides of Pickerel Lake between Sec. 32 & 33, T45N, R30W were both located from original BT's by the undersigned. It was considered that a line between these two corners extended south the record distance of 29.91 chains from the South M.C. presented the best evidence as to the original location of the subject Sec. Cor., contrary to usual practice of proportioning along the township line. The corner was therefore placed 29.91 chains S. of the South M.C. on the extension of the line between the two found M.C.'s. Distances South and west from the corner thus set to natural features called for in original field notes are in very good agreement with this location, but not to east, where it is believed a 1.00 chain or two .50 chain mistakes were made in the original measurement of the two miles just east of the subject corner.

SURVEYOR'S SEAL

SIGNED Arthur D. Enger DATE 9/4/68  
REGISTERED LAND SURVEYOR