

MICHIGAN
DEPARTMENT OF CONSERVATION
FORESTRY DIVISION

LAND CORNER RECORD

T. 34 N.R. 26 W

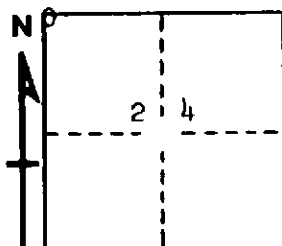
Menominee COUNTY

DESCRIPTION OF CORNER Section corner for sections $\frac{14}{13}$ $\frac{23}{24}$

CORNER MONUMENT 1" iron pipe with 4" aluminum cap

DATE MONUMENT PLACED AND WITNESSED 5/10/68, F. J. Bray

WITNESSES TO CORNER..... 8" aspen (S.24)(NBT) S 67° E, 26½ links



6" W. Pine (NBT) S 12° W, 46 links

7" W. Birch (S.14)(NBT) N 23° W, 51 links

AND

CIRCLE CORNER REGISTERED

DESCRIPTION IN DETAIL AS TO HOW CORNER WAS LOCATED AND IDENTIFIED OR RESTORED.

This corner was placed at ½" iron bolt and rotted wood post fence corner to south. No original evidence found.

SURVEYOR'S SEAL

SIGNED Frank J. Bray DATE 5/24/68
REGISTERED LAND SURVEYOR
Frank J. Bray