

LAND CORNER RECORDATION CERTIFICATE
Filing Requirement of Act 74, Mich. P.A. 1970

For corners in
Menominee
(County)

Located In:

Corner Code ##

1. Public Land Survey	T	R	
	T	R	
	T	R	
	T	R	
2. Property Controlling in Section	S 35	T 36N	R 25W 3
	S 35	T 36N	R 25W 4
3. Miscellaneous Property in Sec.	S 35	T 36N	R 25W 5
	S	T	R

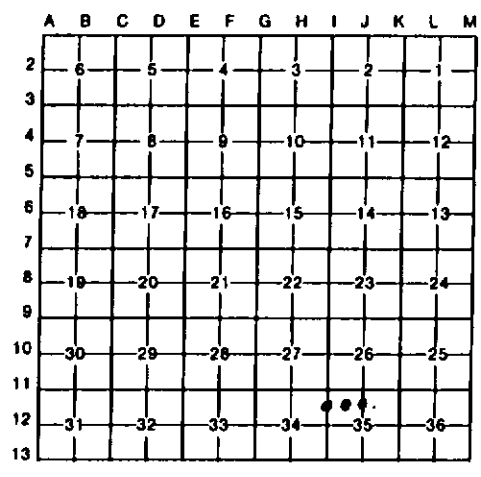
Register of Deeds Stamp & File Number

4. Lot No. _____, Recorded Plat _____
5. Private Claims _____

5 May 04, 1995
4 May 04, 1995

I, Paul R. Bressette, in a field survey on 3 April 27, 1995, 19_____, do hereby certify that under requirements of P.A. 74, Michigan P.A. of 1970, the corner points mentioned in lines 1 and 2 above were in conformance with regulations and rules therefore as required in the current manual of survey instructions of the United States Department of the Interior, Bureau of Land Management or by a decree of a Court of Law and/or that the corner points mentioned in lines 3, 4 and 5 above were in conformance with the rules of the Michigan Board of Land Surveyors or by a Decree of a Court of Law; established, re-established, monumented, re-monumented, recovered, found as expressed below:

NOTE: Not more than 4 corners, all in the same town and range, may be recorded on this certificate.



A. Description of original monument and accessories and/or subsequent restoration:

- (3) North One-sixteenth corner common to Sections 34 and 35. 1964: Billy Buckler, RLS. Set 1" iron pipe w/ aluminum cap (DNR monument) witnessed by: 16" W. Pine S42W 104 1/2 lks.; 16" R. Pine S49E 39 1/2 lks.
- (4) Northwest One-sixteenth corner of Section 35. Not set in original survey, no evidence of subsequent establishment.
- (5) North One-sixteenth corner of Section 35. Not set in original survey, no evidence of subsequent establishment.

B. Description of corner evidence found and/or method applied in restoring or reestablishing corner:

- (3) Found monument and witnesses as described. Rewitnessed monument as found.
- (4) Corner position established at the intersection of the North and West One-sixteenth lines of Section 35. Corner falls in the approximate centerline of a gravel road.
- (5) Corner position established mid-point and on-line between the North and Center Quarter corners of Section 35.

C. Description of monument for corner and accessories established to perpetuate locating the position of the corner:

- | | | |
|------------------------|------------------------|-------------------------|
| (3) DNR monument | (4) DNR monument | (5) DNR monument |
| 12" R. Pine N59E 39.6' | 8" Hemlock N41E 55.4' | 8" Y. Birch N51E 8.1' |
| 22" R. Pine S45W 26.2' | 11" W. Pine S24E 58.8' | 22" Hemlock S31E 16.6' |
| 25" W. Pine S43W 68.6' | 8" Spruce S44W 57.9' | 9" R. Maple S16W 14.4' |
| 7" W. Pine N26W 40.0' | 5" Maple N38W 40.6' | 12" R. Maple N59W 16.2' |



Paul R. Bressette Date 11-15-95
37270

For the Michigan Department of Natural Resources - Forest Management Division