

P.A. Of 1990 On 12/27 1996
Mr. Davis Ris
Chairman

LAND CORNER RECORDATION CERTIFICATE
Filing Requirement of Act 74, Mich. P.A. 1970

For corners in

MENOMINEE Located In: Corner Code #
(County)

1. Public Land Survey T 37N R 25W E01
T 38 R 25 E-13 ✓
T R
2. Property Controlling S T
in Section S T
3. Miscellaneous S T
Property in Sec. S T

RECEIVED FOR FILING
96 DEC 30 AM 9 08
PAGE 4
454 BK 4
BARBARA MORRISON
REGISTER OF DEEDS
MENOMINEE COUNTY, MICHIGAN

Register of Deeds Stamp & File Number

4. Lot No. , Recorded Plat
5. Private Claims

SAME AS CORNER E-13, T38N-R25W

I, William Lenca, in a field survey on Jun 13, 1996 do hereby state that under requirements of P.A. 74, Michigan P.A. of 1970, the corner points mentioned in lines 1 and 2 above were in conformance with regulations and rules therefore as required in the current manual of survey instructions of the United States Department of the Interior, Bureau of Land Management or by a decree of a Court of Law and /or that the corner points mentioned in lines 3, 4 and 5 above were in conformance with the rules of the Michigan Board of Land Surveyors or by a Decree of a Court of Law; established, re-established, monumented, recovered, found as expressed below:

NOTE: Not more than 2 corners, all in the same town and range, may be recorded on this certificate.

	A	B	C	D	E	F	G	H	I	J	K	L
1												
2	6		5		4		3		2		1	
3												
4	7		8		9		10		11		12	
5												
6	18		17		16		15		14		13	
7												
8	19		20		21		22		23		24	
9												
10	30		29		28		27		26		25	
11												
12	31		32		33		34		35		36	
13												

A. Description of original monument and accessories and/or subsequent restoration:

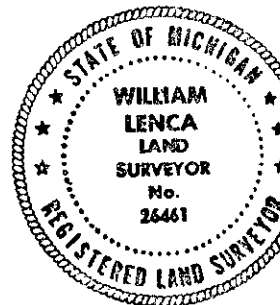
- 1847: Original Survey (Twp Bdy) by James H. Mullett - B.T.'s - Hemlock, 12" - N37°E - 43 lks.; Birch, 12" - N08°W - 42 lks.
All original evidence for this corner has been destroyed by farming activities.
1852: Original Survey (Sec Subd) by George Adair - B.T.'s - Cedar, 14" - S52.5°E - 40 lks.; Cedar, 12" - S52°W - 27 lks.
All original evidence for this corner has been destroyed by farming activities.

B. Description of corner evidence found and/or method applied in restoring or reestablishing corner:

We found an ancient fence corner in a location that matches well with distances to corners 1/2 mile West, 1 mile East of and 1/2 mile South. Mr. Robert Hanchek, a long time local resident, stated that the old fence lines had been in existence and accepted as the boundary for more than 60 years. We accepted the old fence corner as the best available evidence of the position of the original corner.

C. Description of monument for corner and accessories established to perpetuate locating the position of the corner:
Set 2" dia. Aluminum Pipe/3-1/4" dia. Alum. cap stamped for corner location:

8" dia. Cedar	S54°E	45.93 feet	Scr. NBT
5" dia. Balsam	S08°W	13.65 feet	Scr. NBT
5" dia. Cedar	S70°W	85.26 feet	Scr. NBT
Metal Survey Sign Post	East	1.00 feet	



NOTE: All bearings are magnetic bearings. All distances are measured with steel tape. Distances to trees are to nail in side of tree.

Signed by William Lenca
Surveyor's Michigan License No. 26461

Date Dec. 20, 1996