

MAR 29 2000

SECTION

LAND CORNER RECORDATION CERTIFICATE  
Filing Requirement of Act 74, Mich. P.A. 1970

Approved by Menominee County  
Land Survey Remonumentation  
Peer Group Under Act 345 Of  
P.A. Of 1990 On 10/28 1999  
Mel Davis RLS  
Chairman

For corners in  
MENOMINEE  
(County)

Located In: Corner Code #

1. Public Land Survey T 38N R 27W M-4  
T   R     
T   R     
T   R     
2. Property Controlling S   T   R     
in Section S   T   R     
3. Miscellaneous S   T   R     
Property in Sec. S   T   R

Bk. 6 Pg. 42

RECEIVED FOR RECORD  
28 DEC 1999 3:56:09 PM  
BARBARA MORRISON  
REGISTER OF DEEDS  
MENOMINEE, MI 49858

Register of Deeds Stamp & File Number

4. Lot No.       , Recorded Plat         
5. Private Claims         
SAME AS CORNER A-4, T38N-R26W

I, William Lenca, in a field survey on May, 1999 do hereby state that under requirements of P.A. 74, Michigan P.A. of 1970, the corner points mentioned in lines 1 and 2 above were in conformance with regulations and rules therefore as required in the current manual of survey instructions of the United States Department of the Interior, Bureau of Land Management or by a decree of a Court of Law and /or that the corner points mentioned in lines 3, 4 and 5 above were in conformance with the rules of the Michigan Board of Land Surveyors or by a Decree of a Court of Law; established, re-established, monumented, recovered, found as expressed below:

NOTE: Not more than 2 corners, all in the same town and range, may be recorded on this certificate.

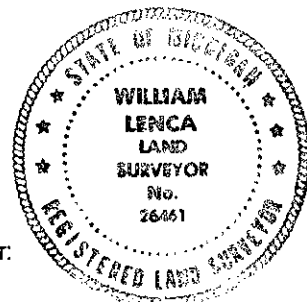
	A	B	C	D	E	F	G	H	I	J	K	L	M
1													
2		6		5		4		3		2		1	
3													
4		7		8		9		10		11		12	
5													
6		18		17		16		15		14		13	
7													
8		19		20		21		22		23		24	
9													
10		30		29		28		27		26		25	
11													
12		31		32		33		34		35		36	
13													

A. Description of original monument and accessories and/or subsequent restoration:

1848: Original Survey by H. Brevoort - B.T.'s - W. Pine, 30" - S38°W - 22 lks.; Cedar, 10" - N32°W - 27 lks. All original evidence for this corner has been destroyed by logging activities and fires.

B. Description of corner evidence found and/or method applied in restoring or reestablishing corner:

We computed the single proportional location for this corner, traversed in to it and searched the area. We were unable to find any conclusive evidence of the original corner post or accessories. We therefore set the corner at the single proportional location, and accepted it as a careful and faithful re-establishment of the position of the original corner.



C. Description of monument for corner and accessories established to perpetuate locating the position of the corner:

Set 3/4" dia. x 4' long aluminum rod/3-1/4" dia. Alum. cap stamped for corner.

5" dia. White Pine	North	20.79 feet	Scr. NBT
24" dia. White Pine	N65°E	40.67 feet	Scr. NBT
7" dia. Hard Maple	S23°E	17.23 feet	Scr. NBT
5" dia. Ironwood	S70°W	31.53 feet	Scr. NBT
Metal Survey Sign Post	South	1.1 feet	

NOTE: All bearings are magnetic bearings. All distances are measured with steel tape. Distances to trees are to nail in side of tree.

Signed by William Lenca  
Surveyor's Michigan License No. 26461

Date July 9, 1999