

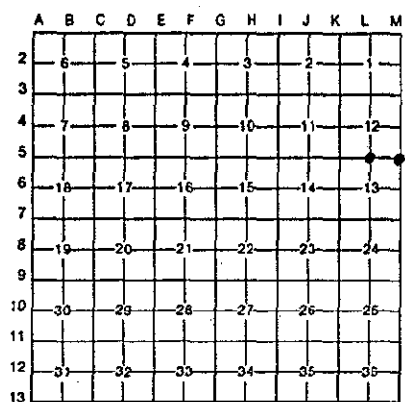
LAND CORNER RECORDATION CERTIFICATE
Filing Requirement of Act 74, Mich. P.A. 1970

For corners in Menominee (County)	Located In:	Corner Code #
1. Public Land Survey	T <u>41N</u> R <u>26W</u>	<u>L5</u> ✓
	T <u>41N</u> R <u>26W</u>	<u>M5 (A5 T41N, R26W)</u>
	T _____ R _____	_____
	T _____ R _____	_____
2. Property Controlling in Section	S _____ T _____ R _____	_____
	S _____ T _____ R _____	_____
3. Miscellaneous Property in Sec.	S _____ T _____ R _____	_____
	S _____ T _____ R _____	_____

96 JUN -3 11 10 53
PAGE # 319 OK
BARS & RECORDS
REGISTERED
RECORDS
Register of Deeds Stamp & File Number

4. Lot No. _____, Recorded Plat _____
5. Private Claims _____

M5 February 07, 1995
I, Paul R. Bressette, in a field survey on 15 March 13, 1995, do hereby certify that under requirements of P.A. 74, Michigan P.A. of 1970, the corner points mentioned in lines 1 and 2 above were in conformance with regulations and rules theretofore as required in the current manual of survey instructions of the United States Department of the Interior, Bureau of Land Management or by a decree of a Court of Law and/or that the corner points mentioned in lines 3, 4 and 5 above were in conformance with the rules of the Michigan Board of Land Surveyors or by a Decree of a Court of Law; established, re-established, monumented, re-monumented, recovered, found as expressed below:



NOTE: Not more than 4 corners, all in the same town and range, may be recorded on this certificate.

A. Description of original monument and accessories and/or subsequent restoration:

(L5) Quarter corner common to Sections 12 and 13. 1852: E.C. Martin, DS. Set wood post witnessed by: Cedar S45E 11 links; Tamarack 18 N65W 9 links. 1963: Billy Buckler, RLS. Set wood post from original tamarack BT with face, axe marks and iron marks visible and a rotted cedar in position for second QBT witnessed by: 9" Cedar S82E 10 links; 11" Cedar N76W 33 links. Corner is recorded in Vol.2, p.358 of Menominee County Records.
(M5) Section corner common to Sections 12, 13, 7 and 18. 1846: Austin Burt, DS. Set cedar post witnessed by: Hemlock 16 S03E 20 links; Hemlock 7 N63 1/2W 11 links. 1852: E.C. Martin, DS. Closed on corner during subdivision of T41N, R25W and T41N, R26W and marked two additional witnesses: Hemlock 20 N48E 30 links (June); Y. Birch 20 S82W 41 links (July). 1955: Billy Buckler, RLS. Set 1" iron pipe w/ brass cap from one hemlock stump in proper position, three probable stump bottoms in place and several old stakes in place witnessed by: 9" Aspen S26W 49 links; 9" Aspen N04W 40 links. Corner is recorded in Vol.2, p.204 of Menominee County Records.

B. Description of corner evidence found and/or method applied in restoring or reestablishing corner:

(L5) Found wood post and NBT's as described, both in excellent condition with both faces open and scribing and measuring notch visible. Wood post was replaced with DNR monument (1" iron pipe w/ 4" aluminum cap), two more witnesses were marked and is accepted as a careful and faithful PERPETUATION of the position of the original corner.
(M5) Found monument and NBT (now 18" Aspen) S31W 32.45 feet from monument. Distance is measured to center of tree since blazes are overgrown. Monument was re-witnessed as found, and is accepted as a careful and faithful PERPETUATION of the position of the original corner.

C. Description of monument for corner and accessories established to perpetuate locating the position of the corner:

(L5) 1" iron pipe w/ 4" aluminum cap	(M5) 1" iron pipe w/ brass cap
7" Cedar N40E 18.2' (1/4S, NBT)	11" Sugar N17E 23.0' (S.7, NBT)
11" Cedar S76E 6.5' (1/4S, NBT)	6" Sugar S48E 24.1' (S.18, NBT)
5" Cedar S30W 16.7' (1/4S, NBT)	6" Ironwood S47W 22.8' (S.13, NBT)
13" Cedar N75W 21.8' (1/4S, NBT)	6" W. Spruce N64W 8.9' (S.12, NBT)
All NBT's are blazed, scribed, painted and tagged. A metal post with sign was placed next to monument. Distances are measured to notch in butt blaze, bearings are magnetic.	All NBT's are blazed, scribed, painted and tagged. A metal post with sign was placed next to monument. Distances are measured to notch in butt blaze, bearings are magnetic.



Signed by Paul R. Bressette Date 1-3-96
Surveyor's Michigan License No. 37270