

MICHIGAN
DEPARTMENT OF CONSERVATION
FORESTRY DIVISION

LAND CORNER RECORD

T. 21 N.R. 5 W

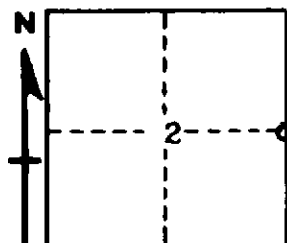
Missaukee COUNTY

DESCRIPTION OF CORNER 1/4 corner common to Sections 1 and 2

CORNER MONUMENT Set 1" pipe with 4" aluminum cap

DATE MONUMENT PLACED AND WITNESSED 10/17/61

WITNESSES TO CORNER.....



20" W. Pine stump - N27E - 57.7 feet

6" J. Pine - S9E - 12.3 feet

AND

CIRCLE CORNER REGISTERED

DESCRIPTION IN DETAIL AS TO HOW CORNER WAS LOCATED AND IDENTIFIED OR RESTORED.

This corner was found while making a survey of Section 2. Found 1 1/2" pipe in concrete at corner, as previously established by Marcus Schaaf, RLS, in 1938. Both BT stumps in place, the NW with evidence of notch.

SURVEYOR'S SEAL

SIGNED

Kenneth J. Oetting
REGISTERED LAND SURVEYOR

DATE 10/17/61