

MICHIGAN
DEPARTMENT OF CONSERVATION
FORESTRY DIVISION

LAND CORNER RECORD

T. 24 N. R. 7 W

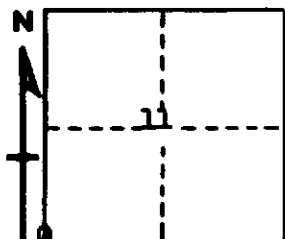
Missaukee COUNTY

DESCRIPTION OF CORNER Sec. corner common to Sections 10-11-14-15

CORNER MONUMENT Left 2" pipe in place, set 1" pipe to surface

DATE MONUMENT PLACED AND WITNESSED April 25, 1966

WITNESSES TO CORNER.....



24" H. Maple N 55 W 39.6'

7" H. Maple N 51 E 41.0'

AND

DESCRIPTION IN DETAIL AS TO HOW CORNER WAS LOCATED AND IDENTIFIED OR RESTORED.

This corner was found while making a survey in this township.
Found 2" pipe at road intersection, about 16" below surface
of road. Appears to have been accepted by adjoining occupation.
Probably established in early survey by county surveyor. Con-
sidered acceptable as proper location for corner.

SURVEYOR'S SEAL

SIGNED Kenneth J. Ostling DATE April 25, 1966
REGISTERED LAND SURVEYOR #10068