

MICHIGAN  
DEPARTMENT OF CONSERVATION  
FORESTRY DIVISION

LAND CORNER RECORD

T. 24 N. R. 8 W

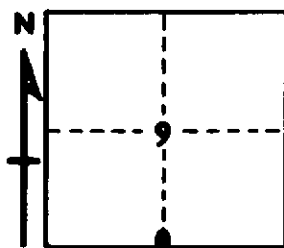
Missaukee COUNTY

DESCRIPTION OF CORNER 1/4 corner common to Sections 9-16

CORNER MONUMENT Set 1" pipe with 4" alum. cap below surface

DATE MONUMENT PLACED AND WITNESSED 4-17-67

WITNESSES TO CORNER.....



CIRCLE CORNER REGISTERED

5" S. Maple S 40 W 86.4°

7" S. Maple N 57 W 48.6°

AND

DESCRIPTION IN DETAIL AS TO HOW CORNER WAS LOCATED AND IDENTIFIED OR RESTORED.

This corner was found during a survey in this area. Previously restored by Fargo Engineering for Consumers Power survey. Merrill also apparently used this corner and witnessed same. Falls in centerline of N-S county road.

SURVEYOR'S SEAL

SIGNED \_\_\_\_\_ DATE 5-24-67  
REGISTERED LAND SURVEYOR #10068