

SURVEY & REMONUMENTATION

JAN 22 2001

Liber 00012 Page 0400

SECTION MONTMORENCY COUNTY REMONUMENTATION LAND CORNER RECORDATION CERTIFICATE Filing Requirement of Act 74, Mich. P.A. 1970

For corners in

Located in:

Montmorency
(County)

Briley
(Township)

Corner Code #

1. Public Land Survey

T 30N R 2E

B - 11

2. Property Controlling
in Section

S
S

T R
T R

3. Miscellaneous
Property in Sec.

S
S

T R
T R

4. Lot No. , Recorded Plat

5. Private Claims

STATE OF MICHIGAN
MONTMORENCY COUNTY
Recorded & Filed

10-27-2000 11:53:55

TERESA WALKER
REGISTER OF DEEDS

Register of Deeds Stamp & File Number

I, Larry G. Beauregard, in a field survey on MARCH, 20 00, do hereby certify that under requirements of P.A. 74, Michigan P.A. of 1970, the corner points mentioned in lines 1 and 2 above were in conformance with regulations and rules thereof as required in the current manual of survey instructions of the United States Department of the Interior, Bureau of Land Management or by a decree of a Court of Law and/or that the corner points mentioned in lines 3, 4 and 5 above were in conformance with the rules of the Michigan Board of Land Surveyors or by a Decree of a court of Law; established, re-established, monumented, re-monumented, recovered, found as expressed below:

NOTE: Not more than 2 corners, all in the same town and range, may be recorded on this certificate.

A. Description of original monument and accessories and/or subsequent restoration:

B - 11 ¼ corner between Sections 30 & 31.

1840 Lewis Clason D.S. Set Qr. Sec. Post. Wit's. Mkd. (Aspen 5" N54°E 27 lks.) (Y. Pine 6" S46°W 34 lks.)

Date & Surveyor unknown. Set pipe.

1980 Leo R. Smith RLS #10706. (Surveyor for Scott Eng.) Fnd. pipe & accepted its position in a section divisional survey of Sec. 30. No Wit's. Mkd.

1991 Donald E. Marlatt P.S. #18660. Filed Act #132. Rec. L. 10004, P. 0239. No description of corner. Wit's. Mkd. (S85°W 6" Maple 17.3") (South 5" N. Pine 9.4' R) (N50°E 6" Maple 5.4' R) (S40°E 5" Maple 12.0' R)

B. Description of corner evidence found and/or method applied in restoring or reestablishing corner:

March 2000: Fnd. 1" pipe & wit's. by Marlatt. Re-placed pipe with 4" x 36" concrete monument with a 3¼" aluminum Re-mon. Cap on top.

C. Description of monument for corner and accessories established to perpetuate locating the position of the corner:

B - 11 ¼ corner between Section 30 & 31.

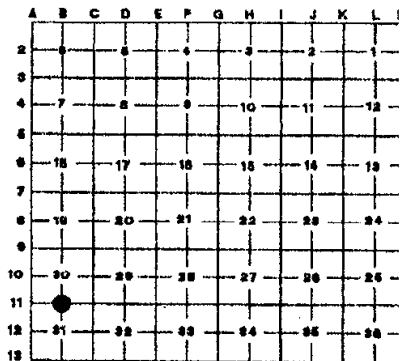
4" x 36" concrete monument with a 3¼" aluminum Mont. Co. Re-mon cap.

Accepted as the best available evidence of the position of the original corner.

Approved by the peer group on July 18, 2000.

S 77° W 17.3' (R) 6" Maple
S 03° E 9.4' (R) 5" N. Pine
N 48° E 5.4' (R) 6" Maple
S 41° E 12.0' (R) 5" Maple

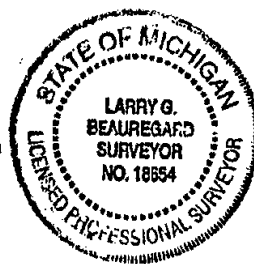
Placed 60d penny spike & P.S. tag #18654 (typ).



APPROVED BY
PEER GROUP

JUL 18 00

LGB



Signed by Larry G. Beauregard

Date 10-27-00

Surveyor's Michigan License No. 18654

FORM APPROVED BY MICHIGAN STATE BOARD OF PROFESSIONAL SURVEYORS, JAN. 26, 1971
REVISED MAY 14, 1975
REVISED JAN., 1983
REVISED OCT., 1995