

SURVEY & REMONUMENTATION

JAN 22 2001

Liber 00012 Page 0415

SECTION MONTMORENCY COUNTY REMONUMENTATION LAND CORNER RECORDATION CERTIFICATE Filing Requirement of Act 74, Mich. P.A. 1970

For corners in

Located in:

Montmorency
(County)

Briley
(Township)

Corner Code #

1. Public Land Survey

T. 30N R. 2E

G-11

2. Property Controlling
In Section

S. T. R.

3. Miscellaneous
Property in Sec.

S. T. R.

4. Lot No. , Recorded Plat

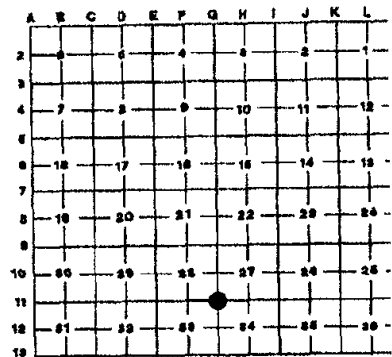
5. Private Claims

STATE OF MICHIGAN
MONTMORENCY COUNTY
Recorded & Filed

10-27-2000 11:57:31

TERESA WALKER
REGISTER OF DEEDS

Register of Deeds Stamp & File Number



I, Larry G. Beauregard, in a field survey on MARCH, 20 00, do hereby certify that under requirements of P.A. 74, Michigan P.A. of 1970, the corner points mentioned in lines 1 and 2 above were in conformance with regulations and rules thereof as required in the current manual of survey instructions of the United States Department of the Interior, Bureau of Land Management or by a decree of a Court of Law and/or that the corner points mentioned in lines 3, 4 and 5 above were in conformance with the rules of the Michigan Board of Land Surveyors or by a Decree of a court of Law; established, re-established, monumented, re-monumented, recovered, found as expressed below:

NOTE: Not more than 2 corners, all in the same town and range, may be recorded on this certificate.

A. Description of original monument and accessories and/or subsequent restoration:

G-11 Corner common Sections 27-28-33 & 34.

1840 Lewis Clason, D.S. Set Post Cor. Sec's 27-28-33 & 34. Wit's Mkd. (Y. Pine 26" S74E 12lks.) (W. Pine 12" N42W 31 lks.)

1935 Frank N. Smith RLS #754, field notes have fnd. old stake and placed angle iron by stake. Wit's Mkd. (14" B. Oak N57W 42.6') (7" B. Oak S29W 45.2')

1941 Frank N. Smith RLS #754, set 2 1/2" concrete monument at corner. Wit's Mkd. (N45E 50' 4" Conc. Mon.) (S45W 50' 4" Conc. Mon)

1973 Delmer E. Porter P.S. #15410, fnd. 3" conc. mon. & Rec. wit's by Smith in 1935 in a section divisional survey of Sec. 27. Filed LCRC Rec. L.1, P.56, & L.1, P.63, wit's fnd & mkd. on each LCRC (N57W 43.04'(M) 42.6'(R) 30" Oak) (S29W 45.63'(M) 45.2'(R) 24" Oak) (S45E 46.82' P. Pole)

1975 Donald E. Marlett P.S. #18660, fnd. existing monument. Filed Act #132 Rec. L.2, P.62. (No wit's mkd.) Filed LCRC Rec. L.1, P. 137 Fnd. existing monument. Rec. Wit's fnd. (N45E & S45W 50' 4" Conc. Mon.) (S30W 45.55'(M) 45.63'(R) 20" Oak) (N55W 43' (M) 43.04 (R) 30" Oak).

1975 Larry G. Beauregard P.S. #18654 (Surveyor for Scott Eng., Co. Inc.) Fnd. Mon. at Cor. Filed Act #132, Rec. L.2, P.69, Rec. Wit's mkd. (N57W 42.6' B. Oak 24") (S29W 45.2' B. Oak 30"). Filed LCRC Rec. L.1, P.140. Wit's same as above.

1998 Joseph C. Kapelczak P.S. #24598. Fnd. 1/4" rod & Rec. Wit's from LCRC Rec. L.1, P.137. & LCRC Rec. L.1, P.140. Wit's Mkd. (Spike in NE side of 36" Maple AZ 307° 43.02') (Spike in NW side of 32" Maple AZ 211° 45.32') (Spike in S. side of 30" Maple AZ 80° 58.99') (Buried Cable marker AZ 105° 34.45') Lat. N 597935.011, Long. E 19729798.968, NAD83 (1984) SPC. MI. Central Zone (International Feet).

1998 Larry G. Beauregard P.S. #18654 (Surveyor for Scott Assoc., Inc.) Fnd. Mon. at Cor. Filed Act #132, Rec. L.10005, P.0038. Wit's fnd. (S40E 48.74' P. Pole 48.74' P.K. Nail) (N85E 56.86' 34" R. Oak Placed nail & tag) (N55W 42.87' 42" R. Oak Ex. Spike) (S30W 45.26' 33" R. Oak Ex. Spike)

B. Description of corner evidence found and/or method applied in restoring or reestablishing corner:

March 2000: Fnd. 3" concrete monument at corner and one 4" wit. mon. by Smith & Rec. Wit's by Porter. Placed 3/4" aluminum Re-mon cap on top.

C. Description of monument for corner and accessories established to perpetuate locating the position of the corner:

G-11 Corner common to Sections 27-28-33 & 34

3" concrete monument with a 3/4" aluminum Mont. Co. Re-mon. cap.

Accepted as the best available evidence of the position of the original corner

Accepted by the peer group on July 18, 2000.

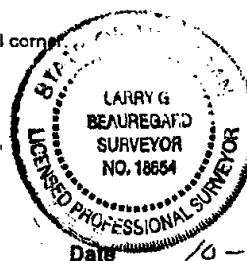
N 45° E 50.00' Fnd. 4" Conc. Mon.

N 57° W 43.04' 39" Oak

S 29° W 45.33' 31" Oak

S 37° E 48.85' Power Pole

Placed 60d penny spike & P.S. tag #18654 (typ).



APPROVED BY
PEER GROUP

JUL 18 00

L.G.B.

Signed by

Larry G. Beauregard

Date

10-27-00

Surveyor's Michigan License No. 18654