

LAND CORNER RECORDATION CERTIFICATE

Filing Requirement of Act 74, Mich. PA 1970

For Corners In: Montmorency Located In Corner Code # (County)

1. Public Land Survey T 30N R 2E F-10 T R 2. Property Controlling in Section S 28 T 30N R 2E 9 S T R 3. Miscellaneous Property in Section S T R S T R

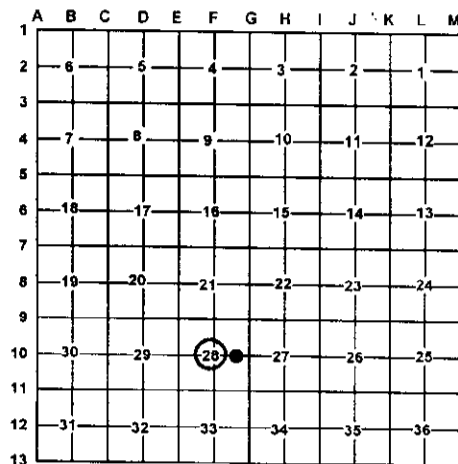
4. Lot No: Recorded Plat:

5. Private Claims:

I, Carl T. Kiiskila, in a field survey on April 26, 2001 do hereby state that under requirements of PA 74, Michigan PA of 1970, the corner points mentioned in lines 1 and 2 above were in conformance with regulations and rules therefore as required in the current manual of survey instructions of the United States Department of the Interior, Bureau of Land Management or by a decree of a Court of Law and/or that the corner points mentioned in lines 3, 4 and 5 above were in conformance with the rules of the Michigan Board of Land Surveyors or by a Decree of a Court of Law; established, re-established, monumented, recovered, found as expressed below:

NOTE: Not more than 2 corners, all in the same town and range, may be recorded on this certificate.

Register of Deeds Stamp & File Number



A. Description of original monument and accessories and/or subsequent restoration:

F-10 This corner position was not established during the original government survey.

9-This corner position was not established during the original government survey.

B. Description of corner evidence found and/or method applies in restoring or re-establishing corner:

F-10 Established the center of section 28 at the intersection of the North-South and East-West quarter section lines.

9- Established the Northwest corner of the Northeast quarter of the Southeast quarter of section 28 as per B.L.M. instructions for the subdivision of a section.

C. Description of monument for corner and accessories established to perpetuate locating the position of the corner:

F-10 Set D.N.R. monument

Wit: 7" White Pine South 42.12' 8" Jack Pine S71°E 42.81' 7" White Pine N54°E 57.73' 10" Red Pine North 75.39' Carsonite Post North 1'±

9- Set 5/8" X 32" rered with P.S. cap #33981

Wit: 16" Maple N53°E 18.72' 22" Oak N41°W 3.63' 20" Twin Oak South 30.05' 10" Maple S70°W 40.81' Carsonite Post North 1'±

Signed by:

Carl T. Kiiskila

Date:

3-7-02

Surveyor's Michigan License No.:

33981

